

HABITAT

Efforts to restore habitat and water must move away from fragmented activity to coordinated activity based on coordinated information. The behaviour prescribed by a stewardship ethic must be promoted and directed towards the places where it can have the greatest impact.

To this end, the Habitat and Water Restoration and Stewardship program area undertakes projects that:

- prioritize watershed status and threats by sub-basin;
- restore habitat in high priority watersheds, including access improvements;
- develop and promote Best Management Practices and other tools; and
- enable coordination of restoration efforts.

Selected projects illustrate each program area on these pages. Map pins show the location of regional projects. For details about all projects, visit the Project section of ThinkSalmon.com.



BC CATTLEMEN'S ASSOCIATION
Farmland - Riparian Interface Stewardship Program
The program provides a range of services to farmers with riparian land to ensure that salmon habitat is protected and can thrive in the midst of agricultural activities.

1

SALMON RIVER WATERSHED SOCIETY

Riparian Zone and Streambank Restoration

This project used watershed scale planning and implementation to restore over 125 sites with a high level of collaboration and cost sharing among local landowners and several funders.

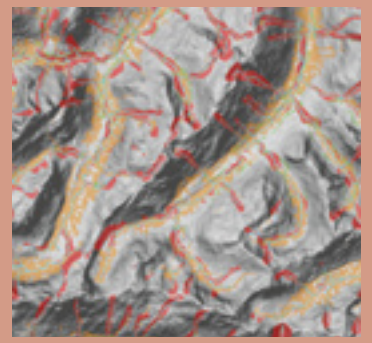


2

UBC DEPARTMENT OF FORESTRY

Development of a Hydrologic Process Model for Mountain Pine Beetle Affected Areas in BC

A component of Nature Conservancy of Canada's Watershed Status and Threats Decision Support Tool, this project analyzes changes in water flow due to mountain pine beetle damage and their impact on salmon habitat. The applied model is based on the dominant hydrological processes in the watershed.



FIRST NATIONS

As the original stewards of the Fraser Basin, First Nations have a wealth of traditional ecological knowledge and spiritual connection to the natural world. Furthermore, these communities have historical title and rights to land and fisheries that are the focus of ongoing conflicts. Recognizing that the hope for reconciliation is tied to hope for salmon, FSWP seeks to engage First Nations and their world views in all four program areas.

SOOWAHLIE FIRST NATION

Sweltzer Creek Enhancement Project

Soowahlie in partnership with G3 Consulting Ltd. assessed a variety of ways to improve sockeye habitat on the Sweltzer Creek outlet of Cultus Lake, including diverting cool, upwelling groundwater to reduce temperatures.



PHOTO: BFO CULTUS LAKE SALMON RESEARCH LABORATORY

PHOTO: BIOD MANASTYRSKI, MINISTRY OF FORESTS

UPPER FRASER FISHERIES CONSERVATION ALLIANCE

Mountain Pine Beetle Impacts on Fish Habitat

UFFCA documents the impacts of historic infestations of Mountain Pine Beetle on salmon habitat in order to inform efforts to mitigate impacts of current and future infestations.



3

GOVERNANCE

Watershed boundaries are defined by natural systems and do not necessarily align neatly with political boundaries. Yet, sustainability requires that decision-making focus on overall watershed health. Governance structures organized by watershed boundaries allow critical collaboration that would not happen otherwise. These structures can be a catalyst for recognizing the need for behaviour change and promoting the change to organizations, institutions and individuals as needed.

The Integrated Planning and Governance program area fosters watershed-focused, collaborative governance approaches at:

- the basin-wide scale, to bring together stakeholders from different sectors in forums that address resource use and conservation; and
- the sub-basin scale, to pilot solutions to key regional policy issues such as management of local water use.

CITY OF COQUITLAM AND KWIKWETLEM FIRST NATION
Coquitlam River Watershed Research and Stakeholder Engagement

Partners collaborate on watershed planning, beginning with work on an accountability matrix, a state of the river summary, and communication tools.



6

FRASER BASIN COUNCIL AND VARIOUS PARTNERS

Integrated Salmon Dialogue Forum

This collaborative and inclusive forum enables all parties to work towards a fully integrated sustainable salmon fishery in ways that respect the Wild Salmon Policy and serve both people and salmon.

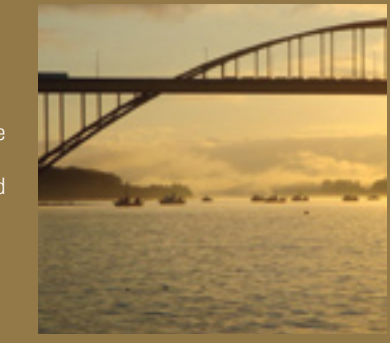


PHOTO: CRAIG ORR, WATERSHED WATCH

FRASER RIVER SALMON TABLE SOCIETY

Building a River Community

The commercial sector works with the Sto:lo to assess needs for restoration of the Cultus Lake sockeye and to move towards a stewardship plan.



8

FIRST NATIONS LEADERSHIP COUNCIL

First Nations Fisheries Dialogue Sessions

The Council hosted a province-wide forum to create the BC First Nations Fisheries Council and an action plan to develop First Nations' unity on fisheries issues.



FISHERIES

For salmon fisheries to be sustainable, we must address the challenges of changing climate and the policy environment. Fisheries and Oceans Canada's Wild Salmon Policy requires that fisheries management protect the genetic diversity of wild salmon. New information and approaches are needed to improve the human decisions in fisheries management.

In support of the Wild Salmon Policy, our Improved Information/Approaches for Sustainable Integrated Fisheries Management program area focuses on projects that offer:

- innovative approaches to in-season assessment of salmon abundance;
- strategies or technologies that reduce fisheries impacts on weak stocks and non-targeted species;
- insight into the impacts of climate change on salmon and how to mitigate them; and
- coordination, collaboration, and information exchange among related efforts and fisheries sectors.



NICOLA WATERSHED COMMUNITY ROUND TABLE
Nicola Water Use Management Plan

A broad based coalition works together on solutions to water management issues in the watershed, which will help ensure the quantity and quality of water needed for fish.

5

PHOTO: CASCADES FOREST DISTRICT

DUCKS UNLIMITED CANADA

Green Infrastructure Model By-law Pilot

DUC works with local governments in the Cariboo Chilcotin on the regional application of a toolkit for green bylaws to protect fish and bird habitat.



7

LGL LTD. AND PARTNERS

Feasibility Study to Develop a Lower Fraser Live Capture and Tagging Facility

In-river fish wheels at Mission capture live fish for tagging and biological sampling, providing information on stock abundance and health.

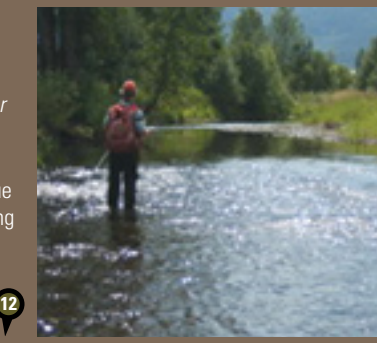


10

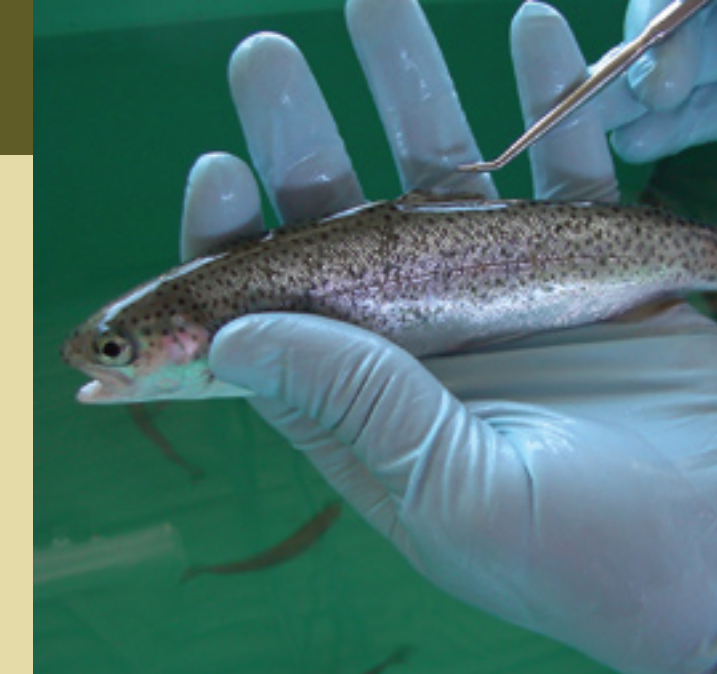
OKANAGAN NATION ALLIANCE

Groundwater Habitat Interactions for Interior Fraser Coho

Study investigates temperature patterns due to groundwater upwelling in streams, which likely create a thermal refuge for juvenile coho.



12



VANCOUVER AQUARIUM PACIFIC OCEAN SHELF TRACKING (POST) PROGRAM

Determination of Cultus Lake Sockeye Run Timing
POST tags Cultus Lake sockeye smolts, and then tracks both their out-migration and in-migration in the hopes of identifying where in the Fraser system high mortality is occurring.

9

SISKA INDIAN BAND

Aboriginal Collaborative Salmon Management

A fish wheel helps to select species for a fishery and to recover tags from Mission (see project to left). Inland commercial salmon fishery developed harvest planning, in-season stock assessment, and processing standards.



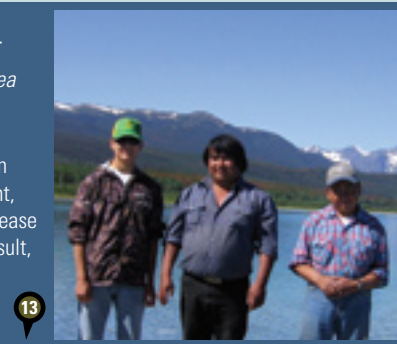
PHOTO: DAVE MOORE

11

XENI GWET'IN FIRST NATIONS GOVERNMENT

Xeni Gwet'in Caretaker Area Fisheries

Community members work with technical consultants on stock and habitat assessment, thereby being trained to increase community's capacity to consult, negotiate, and manage their fish resources.



13

ENGAGEMENT

The more citizens care about and understand how our well being is vitally connected to salmon and watersheds, the more motivated they are to change their behaviour and the behaviour of their organizations and institutions. To ensure an engaged citizen base, each region of the Fraser Basin needs a mix of activities that includes programs for key groups to understand their connection to the watershed, stewardship opportunities in a range of arenas, and strategic efforts to promote specific behaviour change.

The Education and Engagement program area seeks to efficiently cultivate this mix of activities throughout the basin with projects that:

- deliver watershed awareness programs with the potential to be basin-wide pilots;
- develop broad tools that build capacity of stewardship groups for training, funding, and collaboration; and
- employ innovative, targeted outreach strategies to reach key audiences in order to address specific behaviours.

FRASER VALLEY BALD EAGLE FESTIVAL SOCIETY

The Eagle - Salmon Connection

Content about our ecosystems addresses interdependence, biodiversity, sustainability, and the need for conservation and is delivered through school curriculum and other means.



PHOTO: PETER DONALDSON.NET

14

STEWARDSHIP CENTRE FOR BC SOCIETY

Stewardship Works!

SCBC and the Ministry of Environment partner to understand and plan to address the core funding needs of community-based stewardship groups in the Fraser Basin and throughout BC.



STREAM OF DREAMS MURAL SOCIETY

Fraser Basin Streams of Dreams 2007

At schools and community festivals, nearly 6,000 participants learned about how humans can improve their behaviour for the benefit of their watershed. Participants at each of 22 events created a fence mural of hand painted salmon – Dreamfish - as a reminder of the lessons.



LANGLEY ENVIRONMENTAL PARTNERS SOCIETY

Langley Thinks Salmon

This local public awareness project uses a variety of outreach techniques to increase awareness of watershed ecosystems and potential impacts of daily activities on local streams.



15

KINGFISHER INTERPRETIVE CENTRE SOCIETY

KICS Salmon Education & Awareness Programs

The living classroom provides experiential activity on topics such as salmon, their ecosystems and First Nations culture to school children, tourists, and other visitors.



PHOTO: SHONA BOUCE

16

THEYTUS BOOKS INC.

First Nations Publication

Media producers are scoping a publication for decision makers about the relationship of First Nations to salmon, highlighting how this relationship may influence conflicts about fisheries.

