



Fraser Salmon Watersheds Program

Fraser Assembly 2008 Prince George

Mark Saunders
Director

Fraser Salmon & Watersheds Program



Fraser Basin Council



Inspiring changes in human behaviour for the benefit of salmonids and the watersheds on which we all depend

The Fraser Basin



Fraser Salmon & Watersheds Program






Fraser Basin Council



Inspiring changes in human behaviour for the benefit of salmonids and the watersheds on which we all depend

Lower Thompson Coho Distribution

LEGEND

-  Coho Streams (FISS)
-  Coho Lakes (FISS)
-  Coho Spawning Locations (FISS)

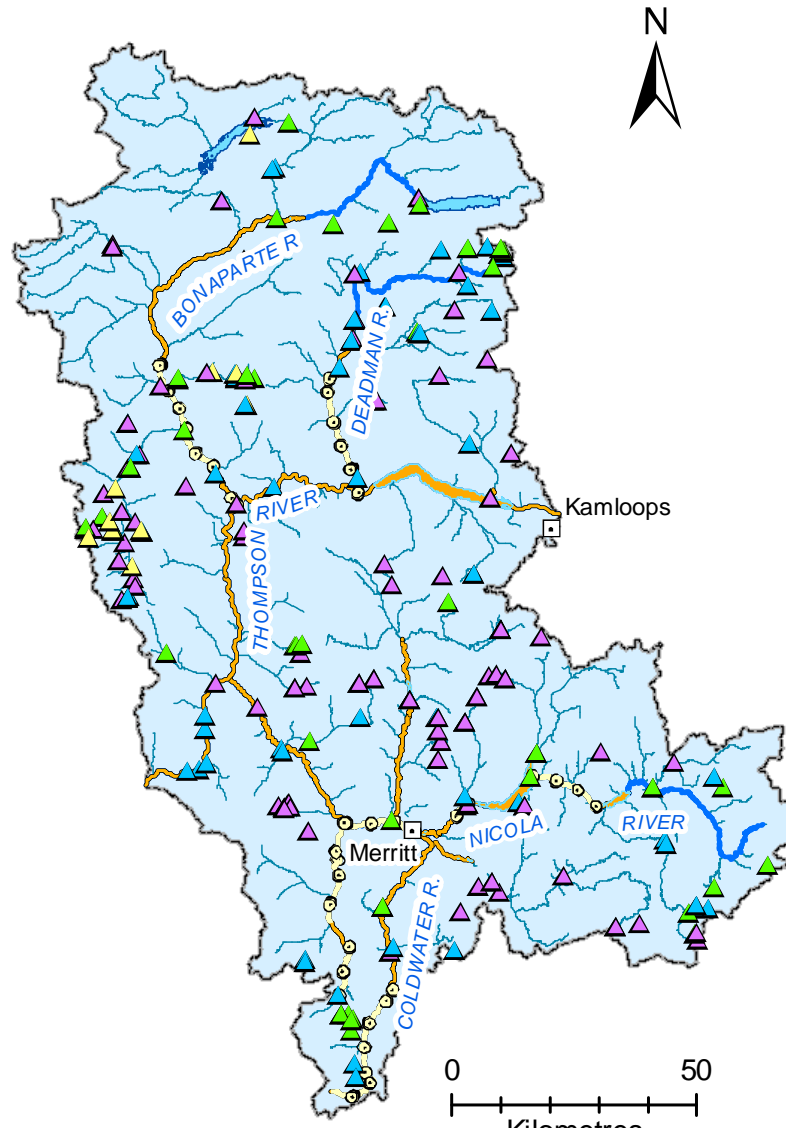


Obstacles to Fish

LEGEND

Obstacles to Fish (FISS et al)

- ▲ Man-made Barrier
- ▲ Natural Hydraulic Feature
- ▲ Potentially Ephemeral
- ▲ Other
- Coho Streams (FISS)
- Coho Lakes (FISS)
- Coho Spawning Locations (FISS)





Riparian Zone Benchmark

LEGEND

Riparian Zone Converted Land (2006)

Benchmark

-  > 5% converted (Watershed Count: 161)
-  < 5% converted (Watershed Count: 103)



Fraser Salmon & Watersheds Program



Fraser Basin Council

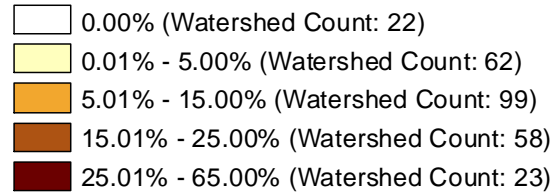


Inspiring changes in human behaviour for the benefit of salmonids and the watersheds on which we all depend

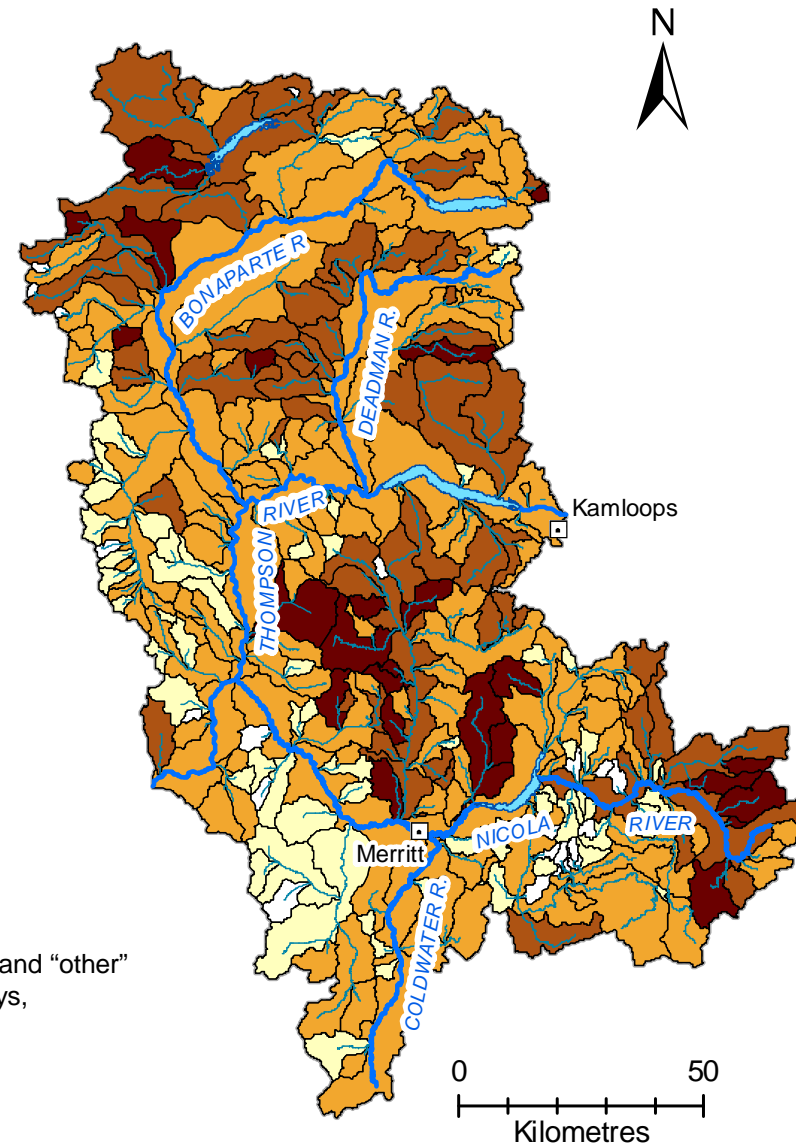
Percent Total Land Converted

LEGEND

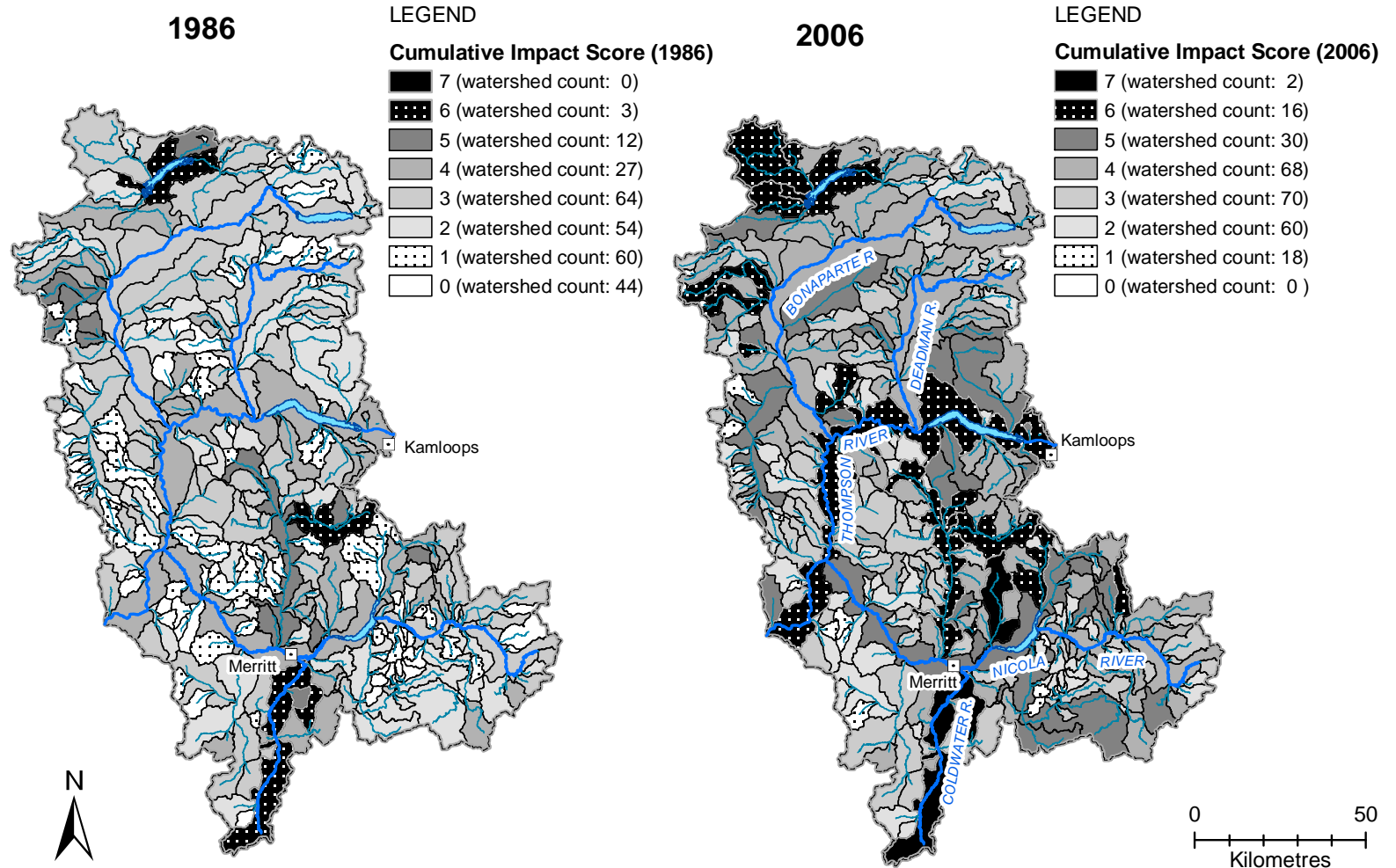
2006 Percent Total Converted Land



Includes: forest disturbance, agriculture, urban and "other"
(golf courses, recreation, mining, highways,
transmission corridors)



Comparison of Watershed Impacts



Fraser Salmon & Watersheds Program



Inspiring changes in human behaviour for the benefit of salmonids and the watersheds on which we all depend

4 WORLDVIEWS





IN THE
FIELD



STUDY
HANDLE
& HARVEST FISH



Boots



ON THE
WATER



INTIMATE
WITH THE
RESOURCE



Fraser Salmon & Watersheds Program



Fraser Basin Council



Inspiring changes in human behaviour for the benefit of salmonids and the watersheds on which we all depend



Fraser Salmon & Watersheds Program



Fraser Basin Council



Inspiring changes in human behaviour for the benefit of salmonids and the watersheds on which we all depend



Fraser Salmon & Watersheds Program



Fraser Basin Council



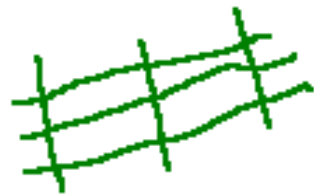
Inspiring changes in human behaviour for the benefit of salmonids and the watersheds on which we all depend



POLICY



LEADERSHIP



ANALYSIS



WATERSHEDS



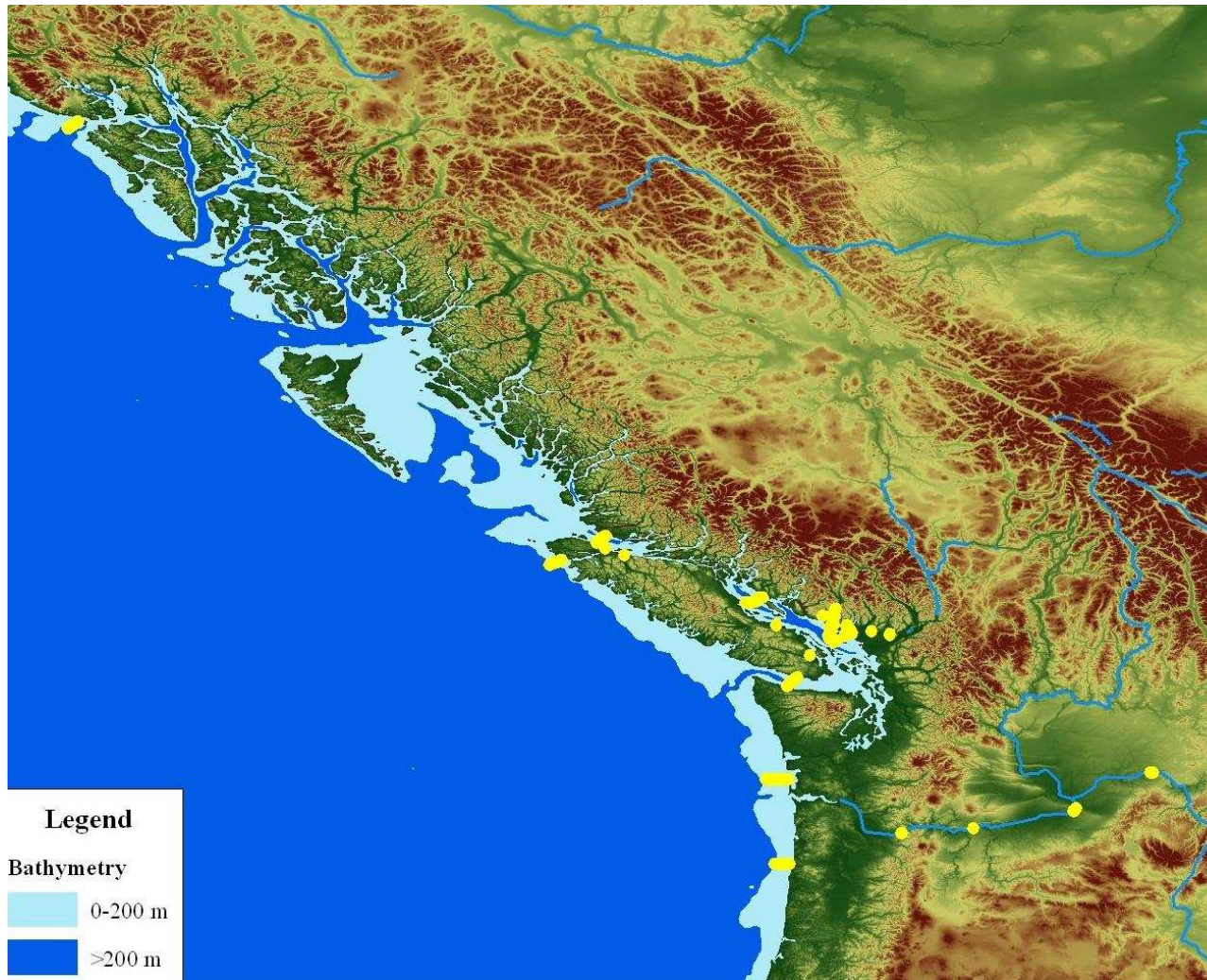
DECISION
MAKING



Fraser Salmon & Watersheds Program



Inspiring changes in human behaviour for the benefit of salmonids and the watersheds on which we all depend



POLICY

GENERAL



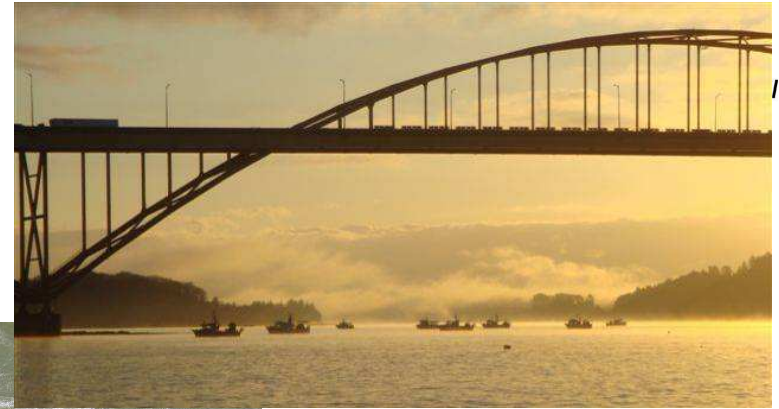
CENTRE

INTERESTS

AGGREGATED



Integrated Salmon Dialogue Forum



Salmon Table

Fraser Salmon & Watersheds Program



Fraser Basin Council



Inspiring changes in human behaviour for the benefit of salmonids and the watersheds on which we all depend

OUT THERE

FOCUSSED



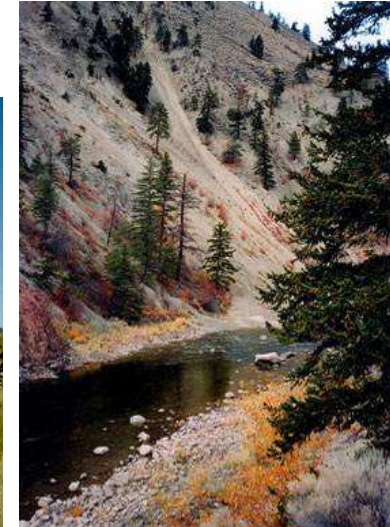
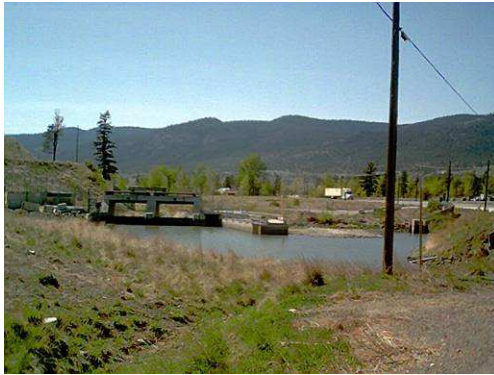
ENDS

NEEDS

SPECIFIC
FISH, LAND, SITUATIONS



NICOLA Water Use Management Plan



Salmon River Watershed Society



Fraser Salmon & Watersheds Program



Inspiring changes in human behaviour for the benefit of salmonids and the watersheds on which we all depend

Vision

Projects

Influence ↑

----- = outside actors

—— = FSWP

Fraser Salmon & Watersheds Program

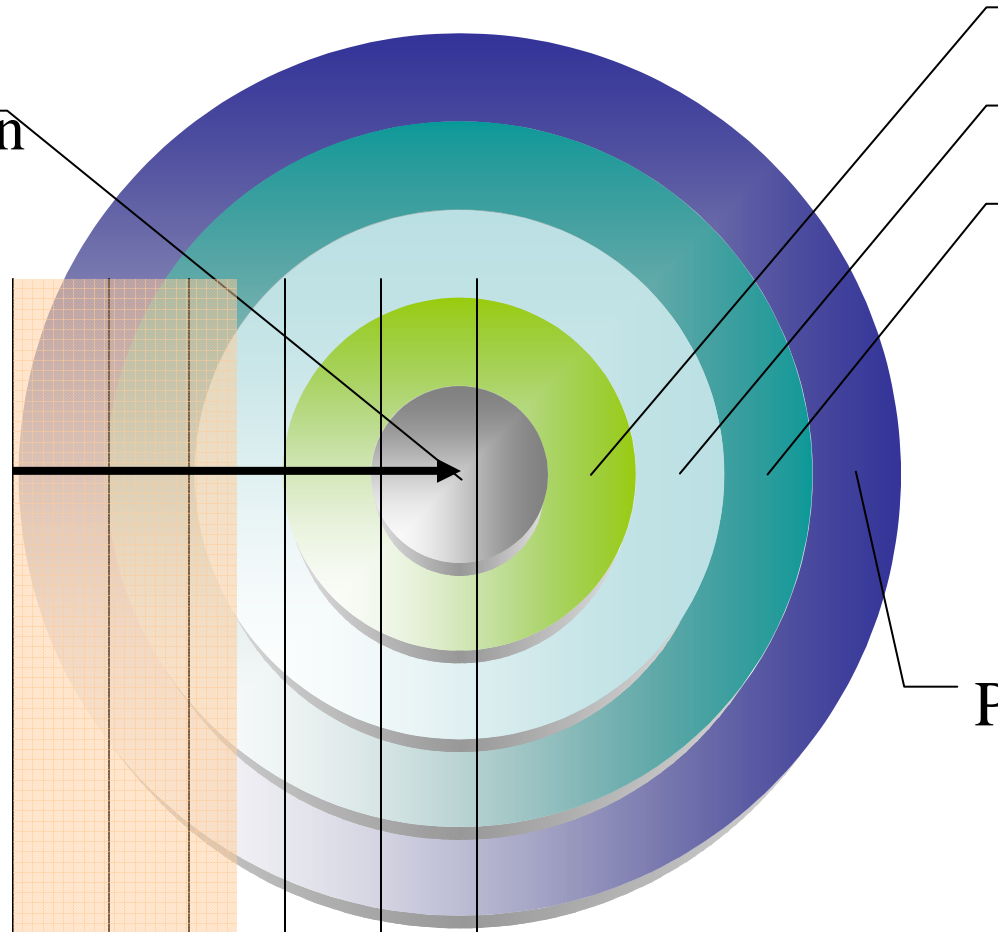


Fraser Basin Council

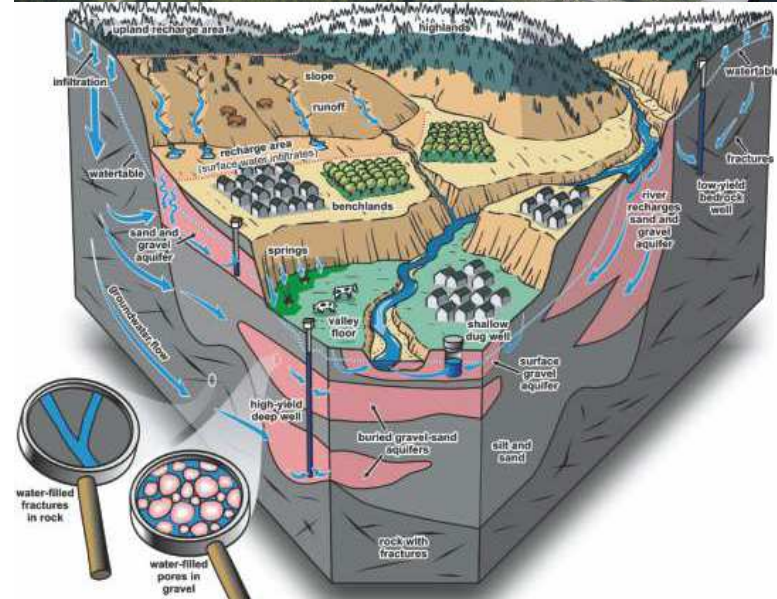
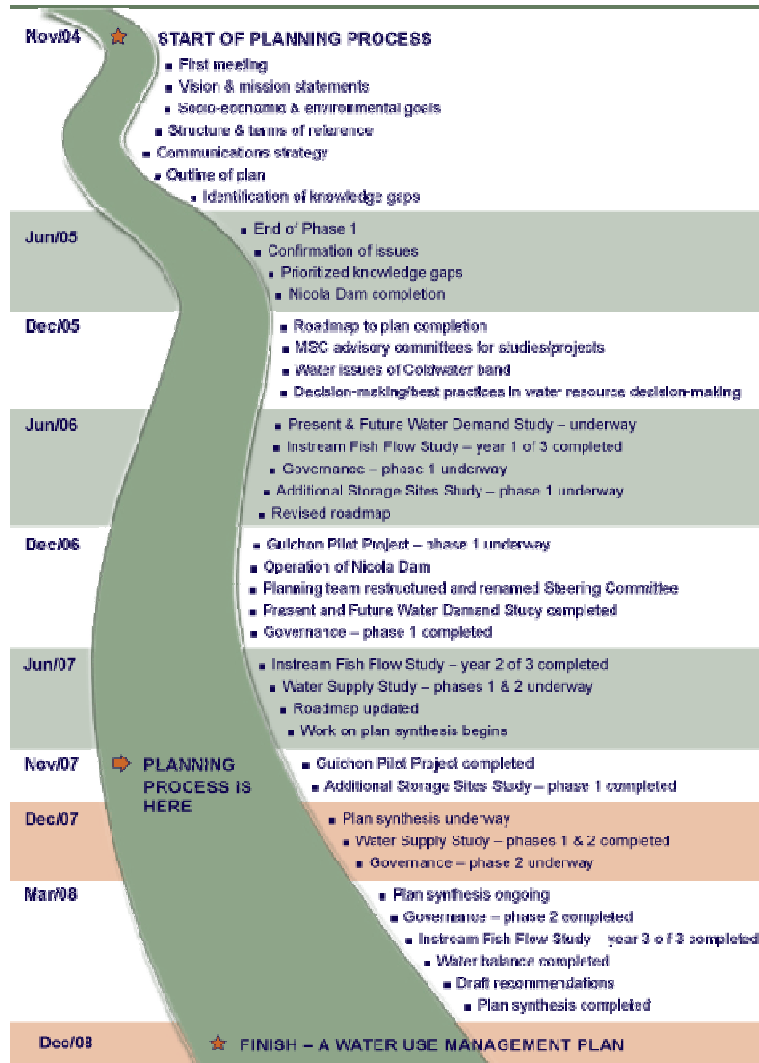


Proj	Imm	Int	U	V
------	-----	-----	---	---

Inspiring changes in human behaviour for the benefit of salmonids and the watersheds on which we all depend



Water/Watershed Governance

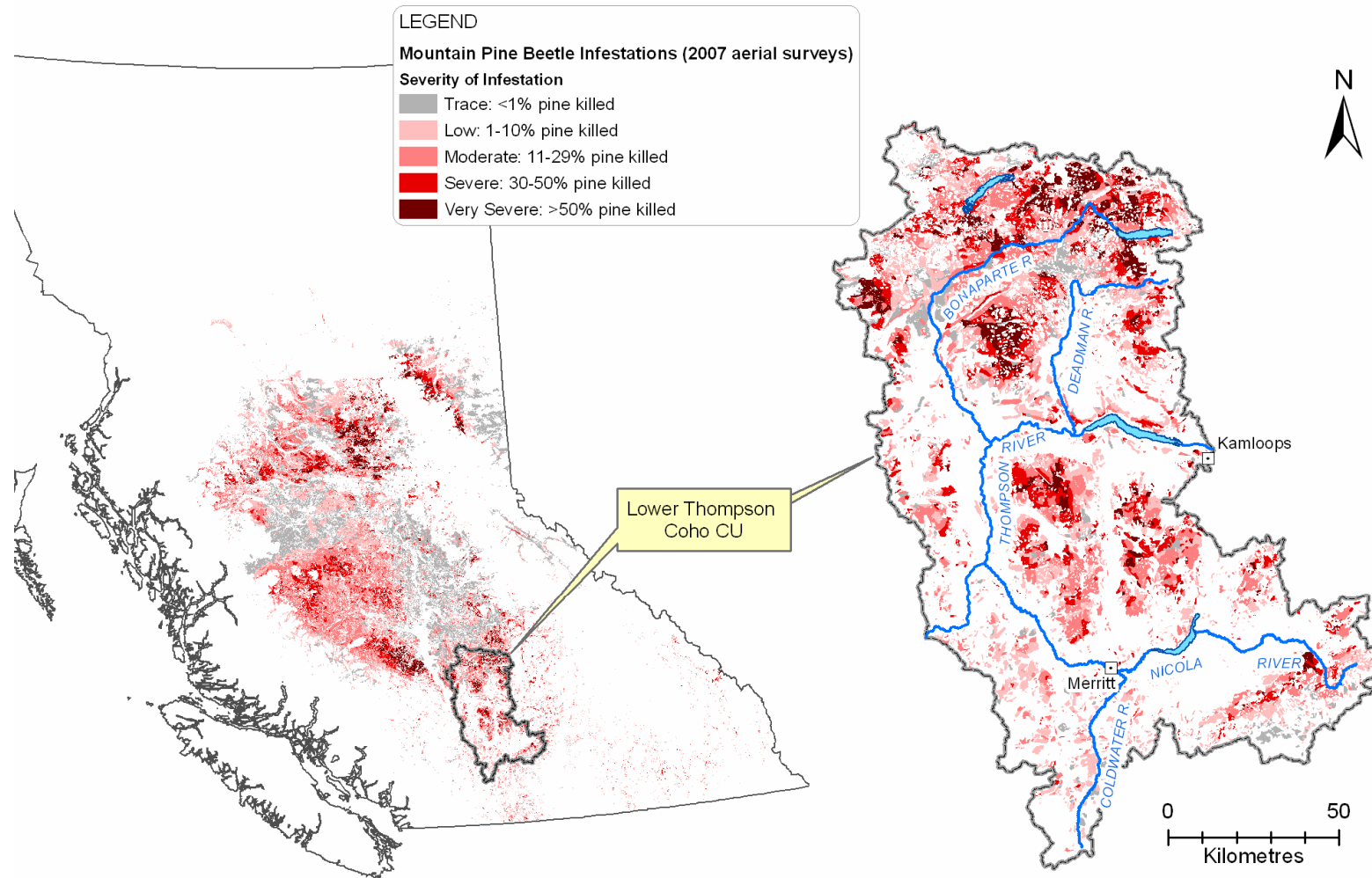


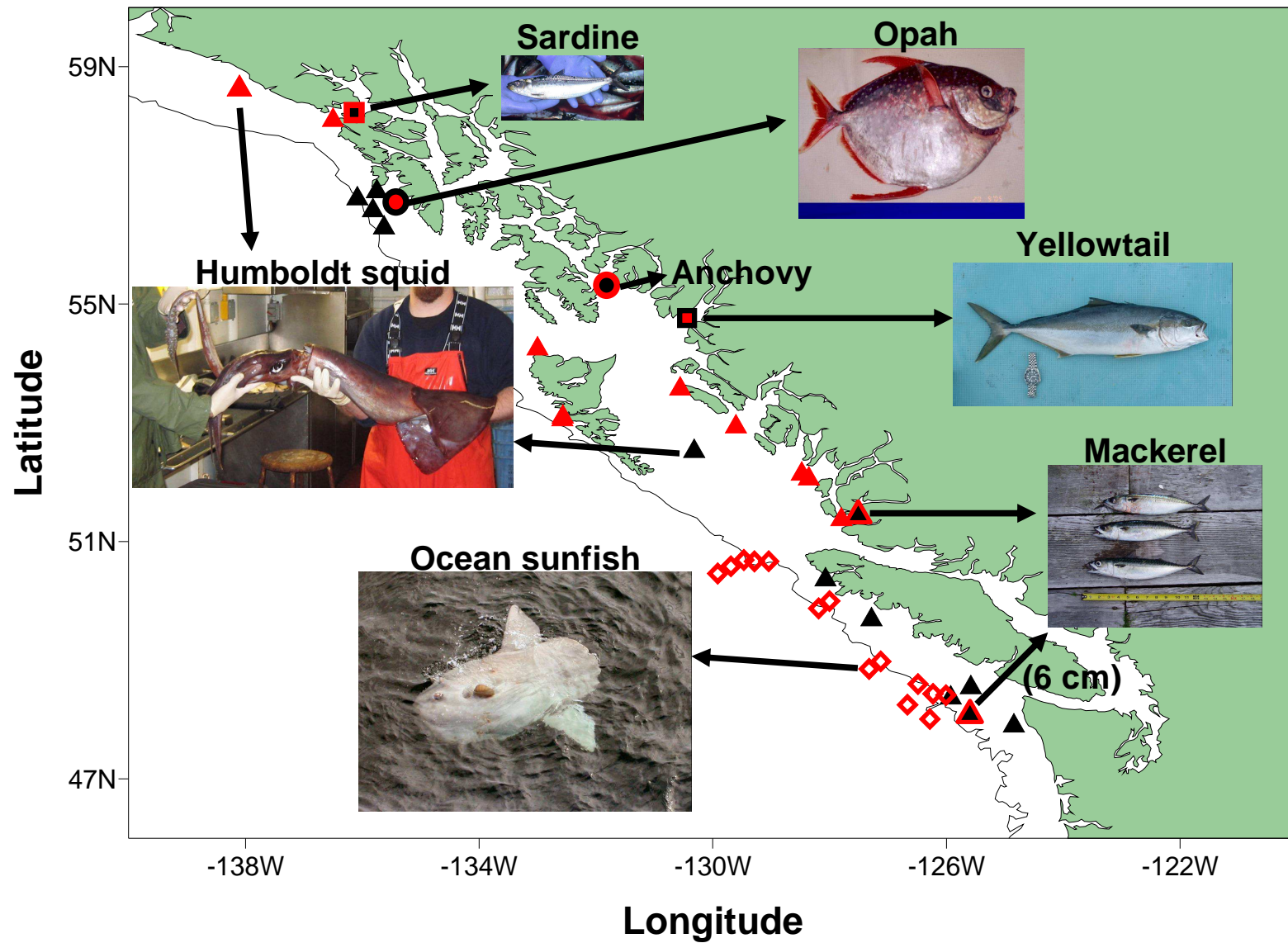
Fraser Salmon & Watersheds Program

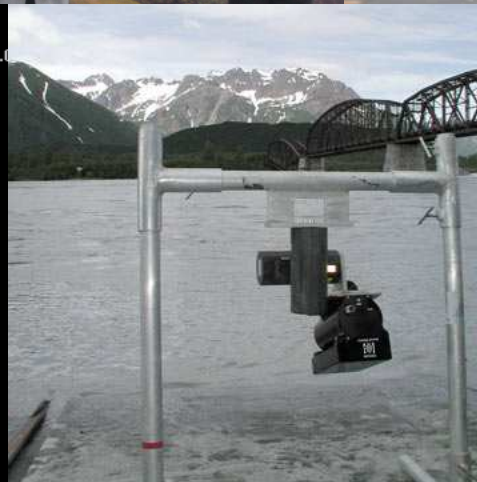
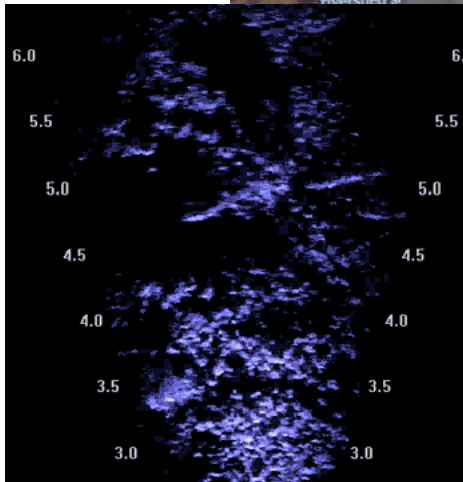


Inspiring changes in human behaviour for the benefit of salmonids and the watersheds on which we all depend

Information



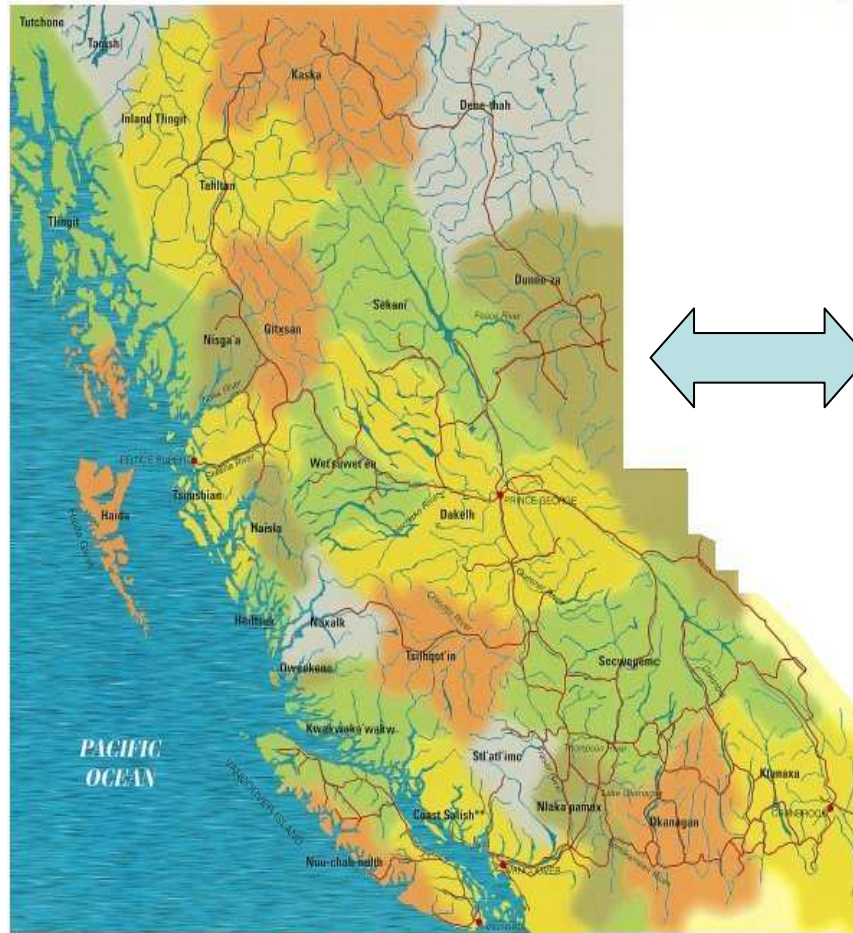


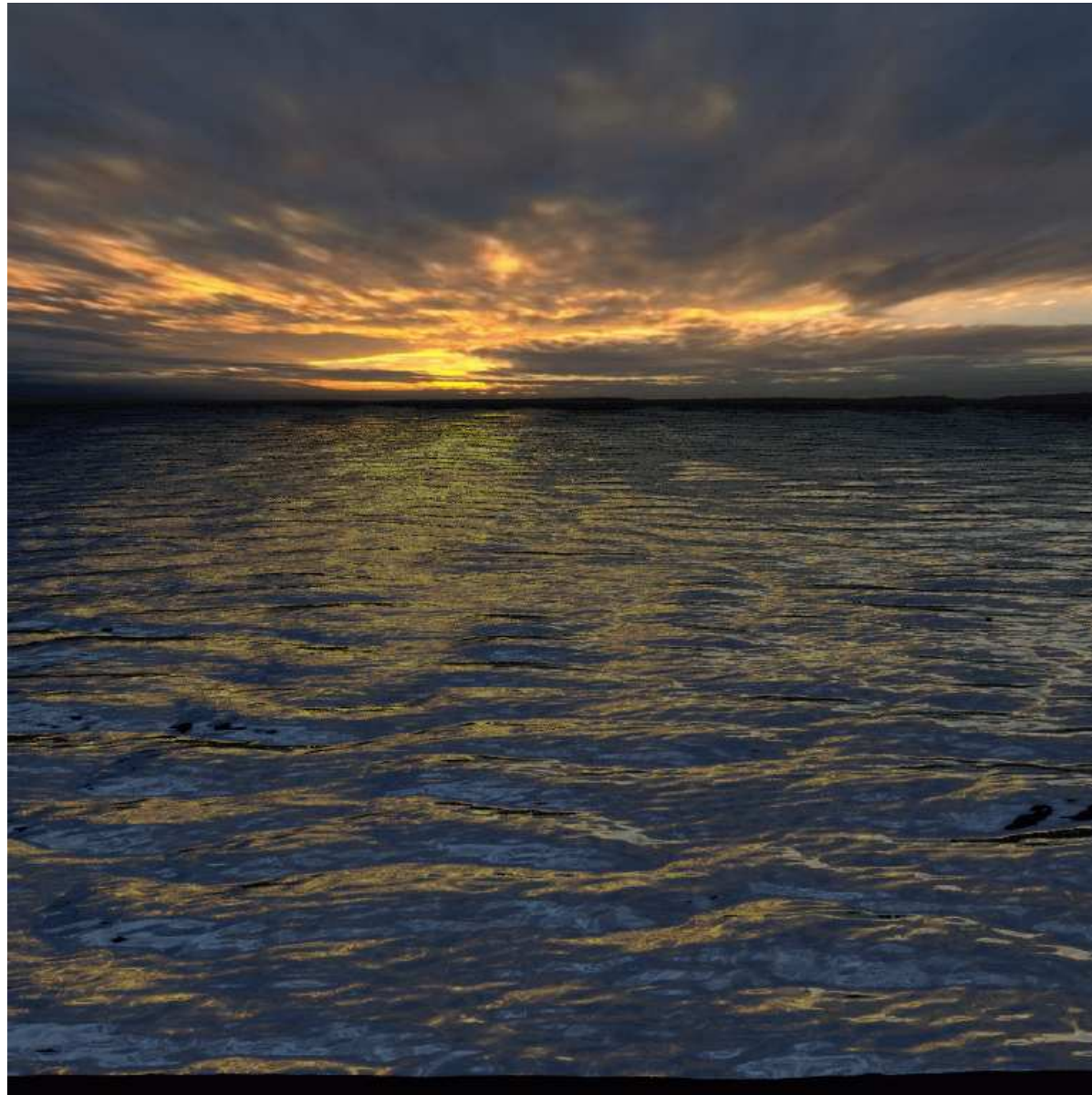


Fraser Salmon & Watersheds Program



Inspiring changes in human behaviour for the benefit of salmonids and the watersheds on which we all depend





Fraser Salmon & Watersheds Program



Fraser Basin Council



Inspiring changes in human behaviour for the benefit of salmonids and the watersheds on which we all depend