



Pacific Salmon
Strategy Initiative

Initiative de la Stratégie
relative au saumon du Pacifique



Shoreline Armour - Direct and Indirect Impacts Affecting Fish and Fish Habitat

Morgan Tidd, MSc, PGeo

Nearshore Geomorphologist

Salmon Habitat Restoration Centre of Expertise



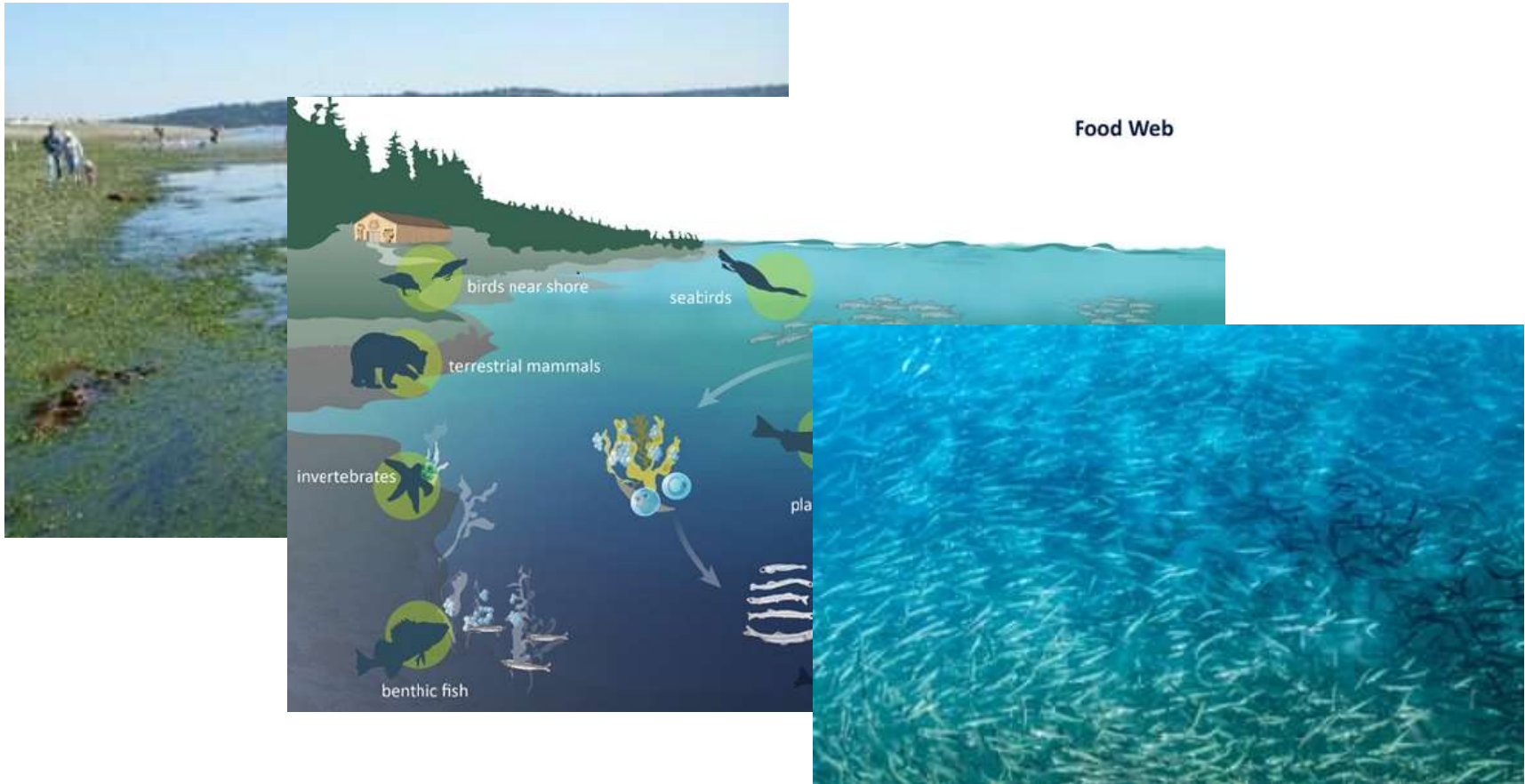
Why is the Nearshore Important for Salmon?



Source: NOAA, 2023



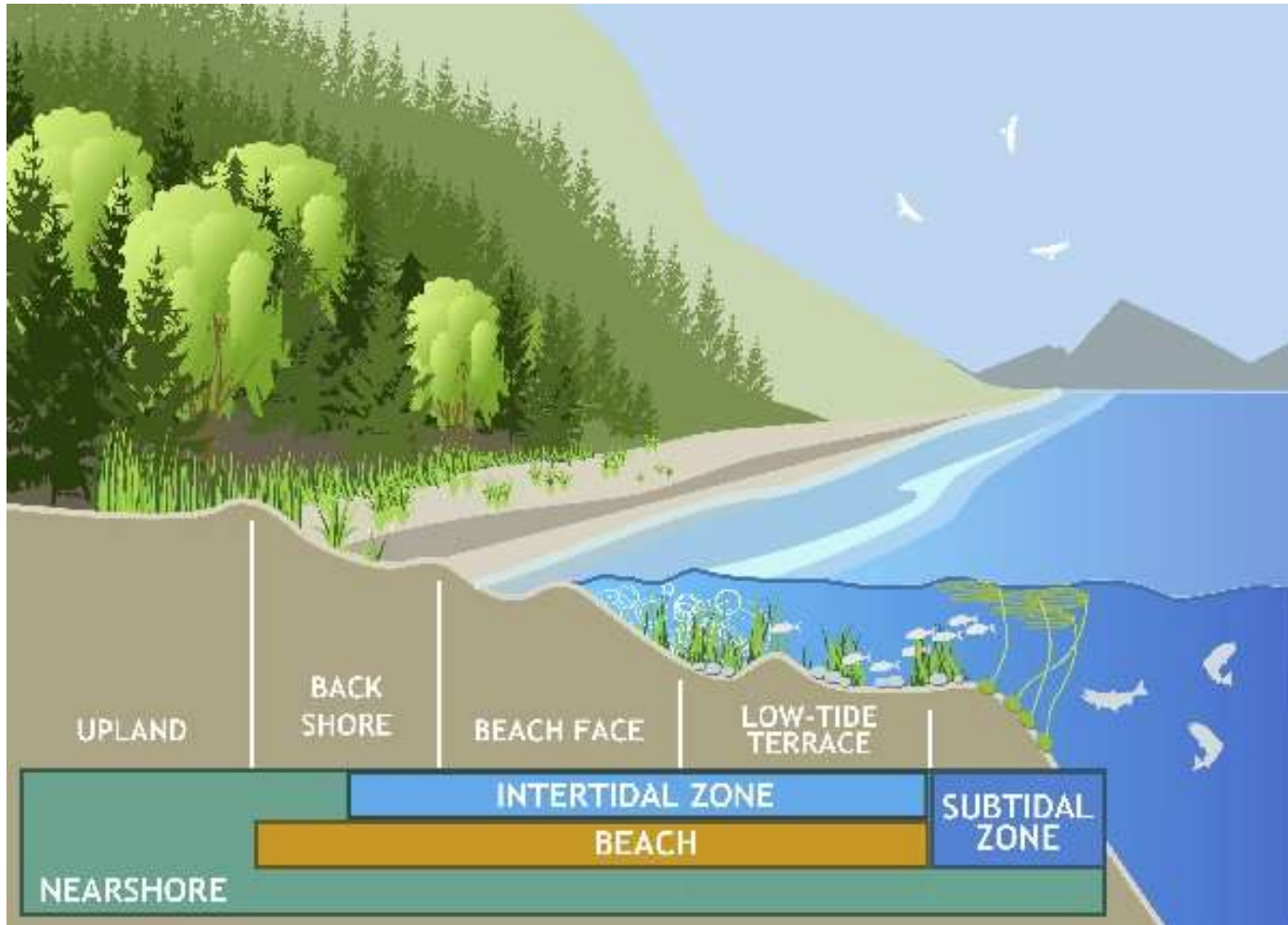
Why the Nearshore is Important?



Source: MidSound Fisheries Enhancement Group, 2023



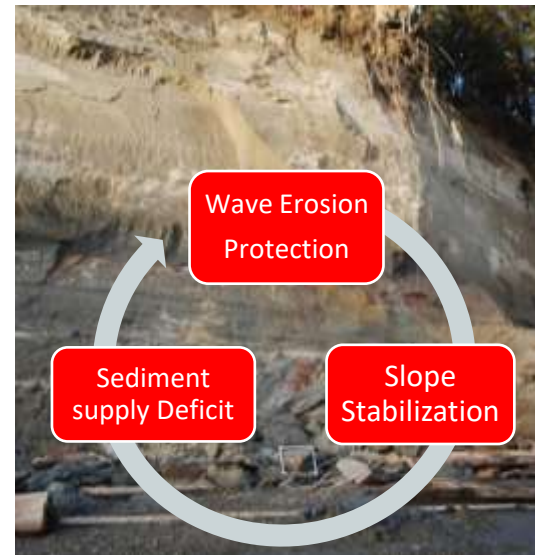
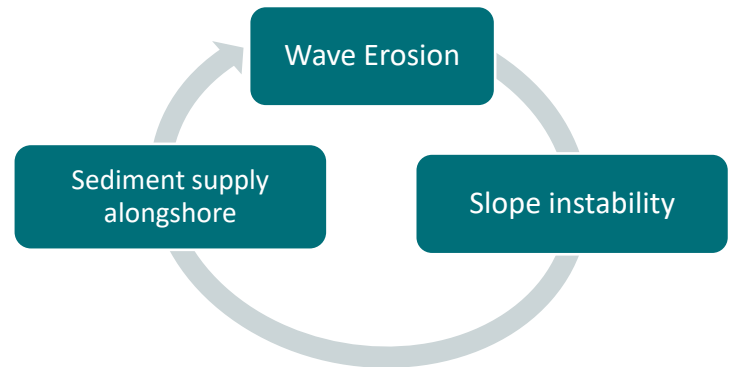
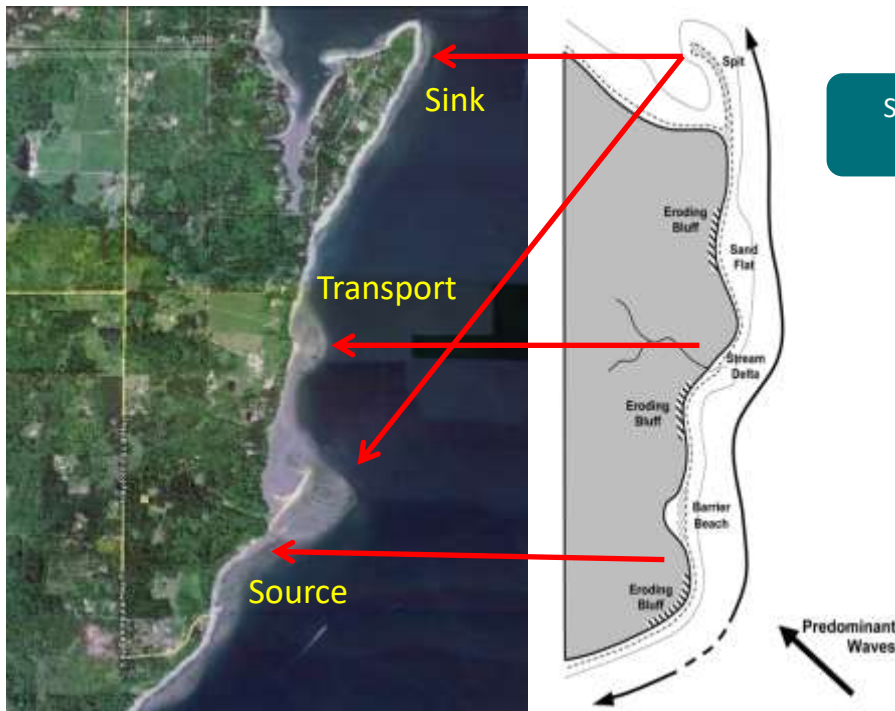
What makes a healthy nearshore?





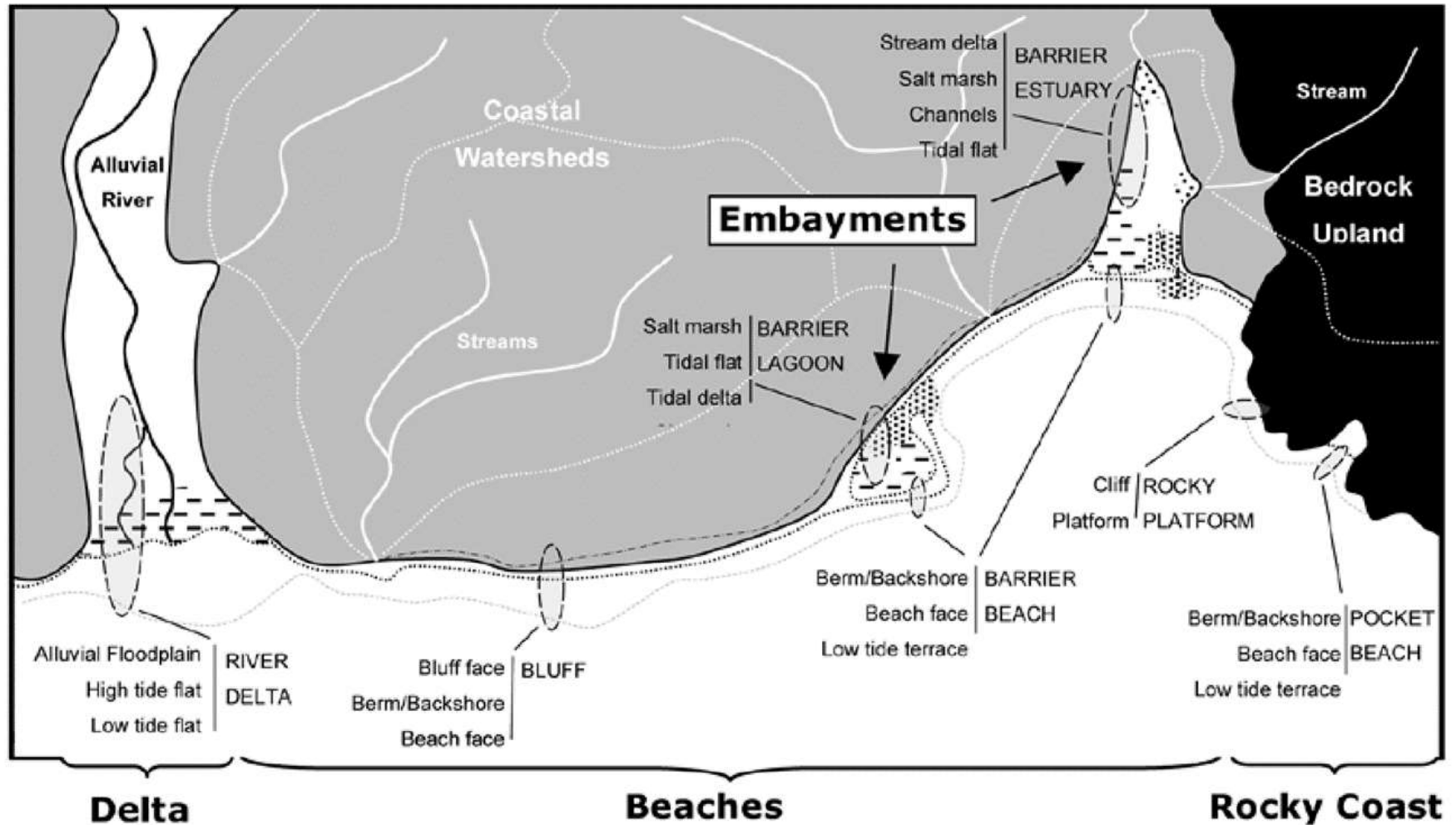
Coastal Processes

A LITTORAL CELL PRIMER





What makes a healthy nearshore?





Why do we need shoreline armour?





Erosion





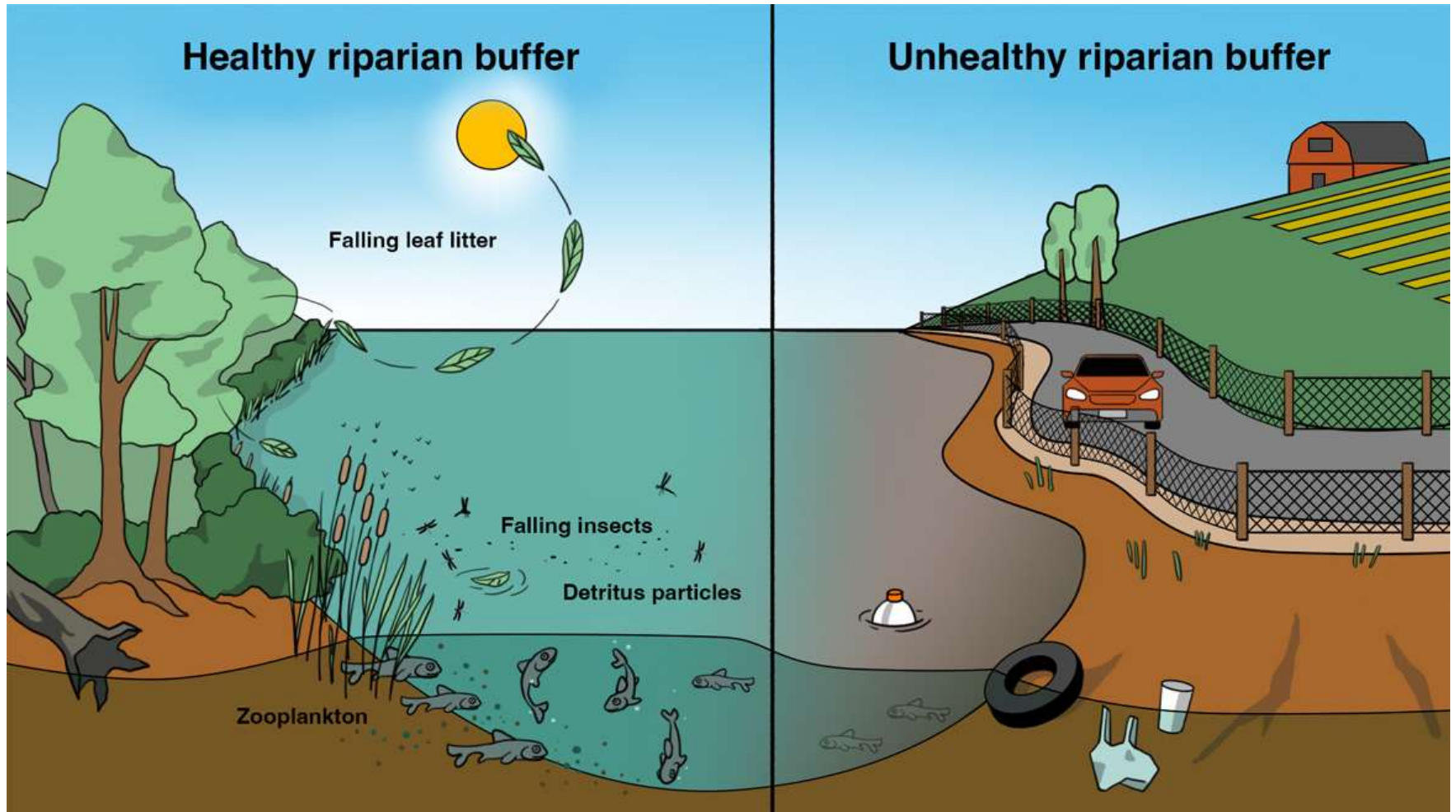
Flooding

- Types of armour used for flooding include:
 - dikes,
 - jetties, and,
 - breakwaters





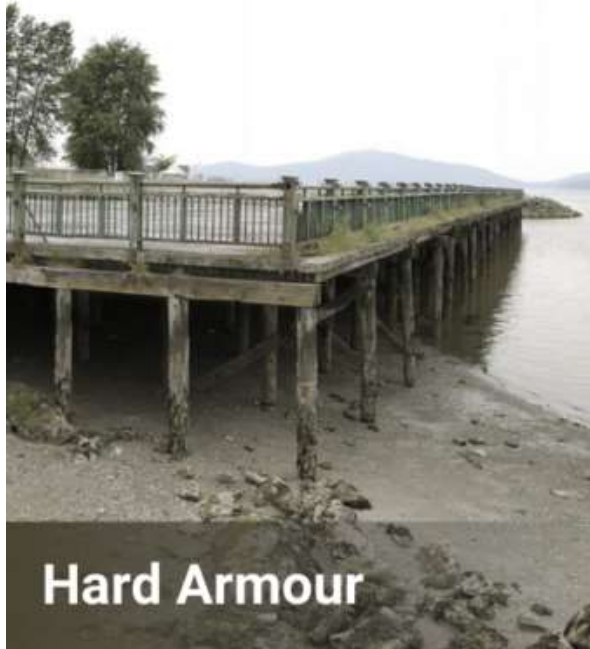
Impacts of Armour to Habitat: Loss of Riparian Habitat





Impacts of Armour to Habitat: loss of upland habitat, habitat fragmentation

Source of
contaminants



Prevents and reduces
pollutants and toxins





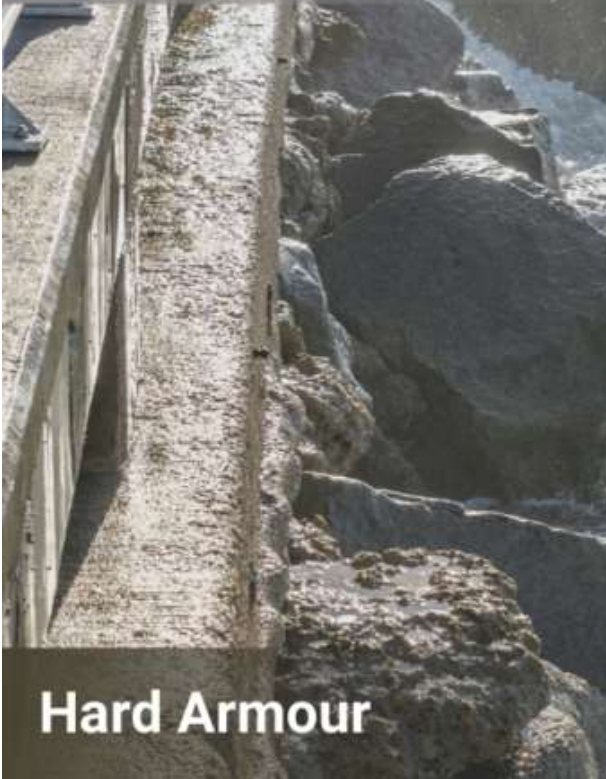
Impacts of Armour to Habitat:





Impacts of Armour to Habitat:

Contaminated runoff



Hard Armour

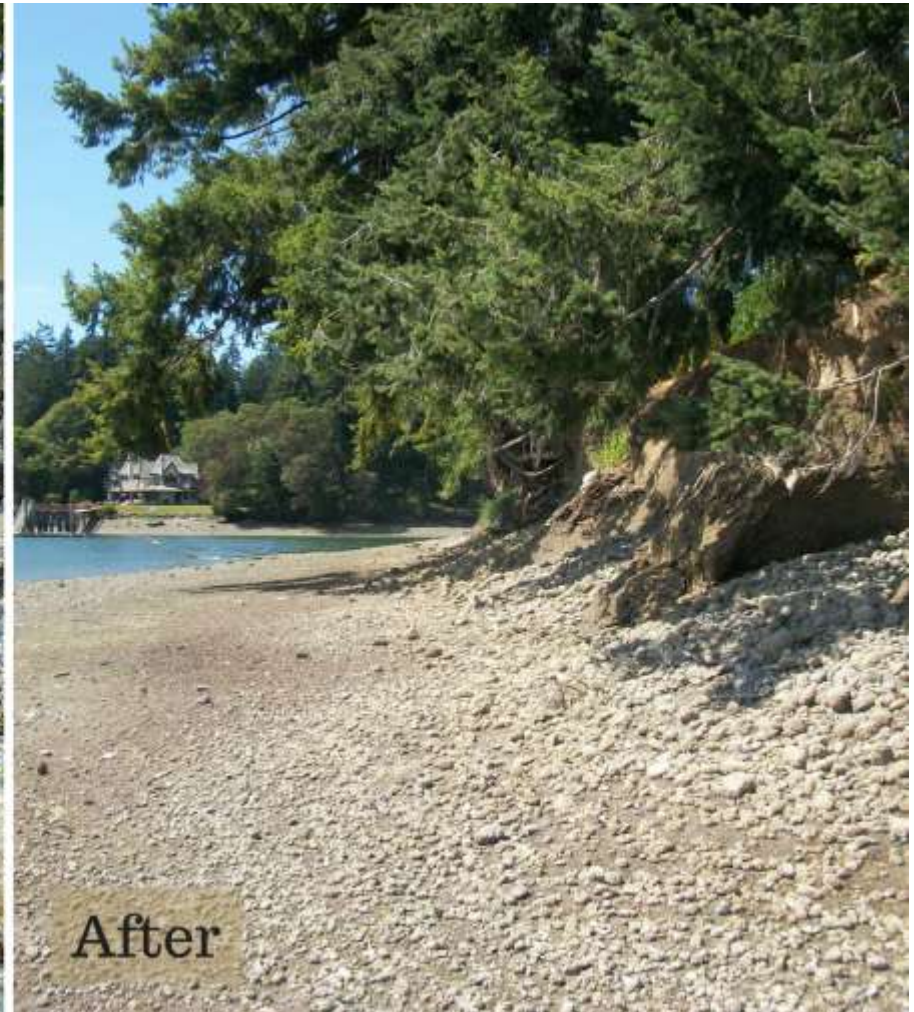
Water Filtration



Green Shores®



Impacts of Armour to Habitat: Changes to the Sediment Transport Regime





Impacts of Armour to Habitat: Changes to the Sediment Transport Regime





Impacts of Armour to Habitat: Changes to the Sediment Transport Regime



Source: Transcoastal Adaptations and Greenshores® (SCBC), 2024

Thank you, Questions?