

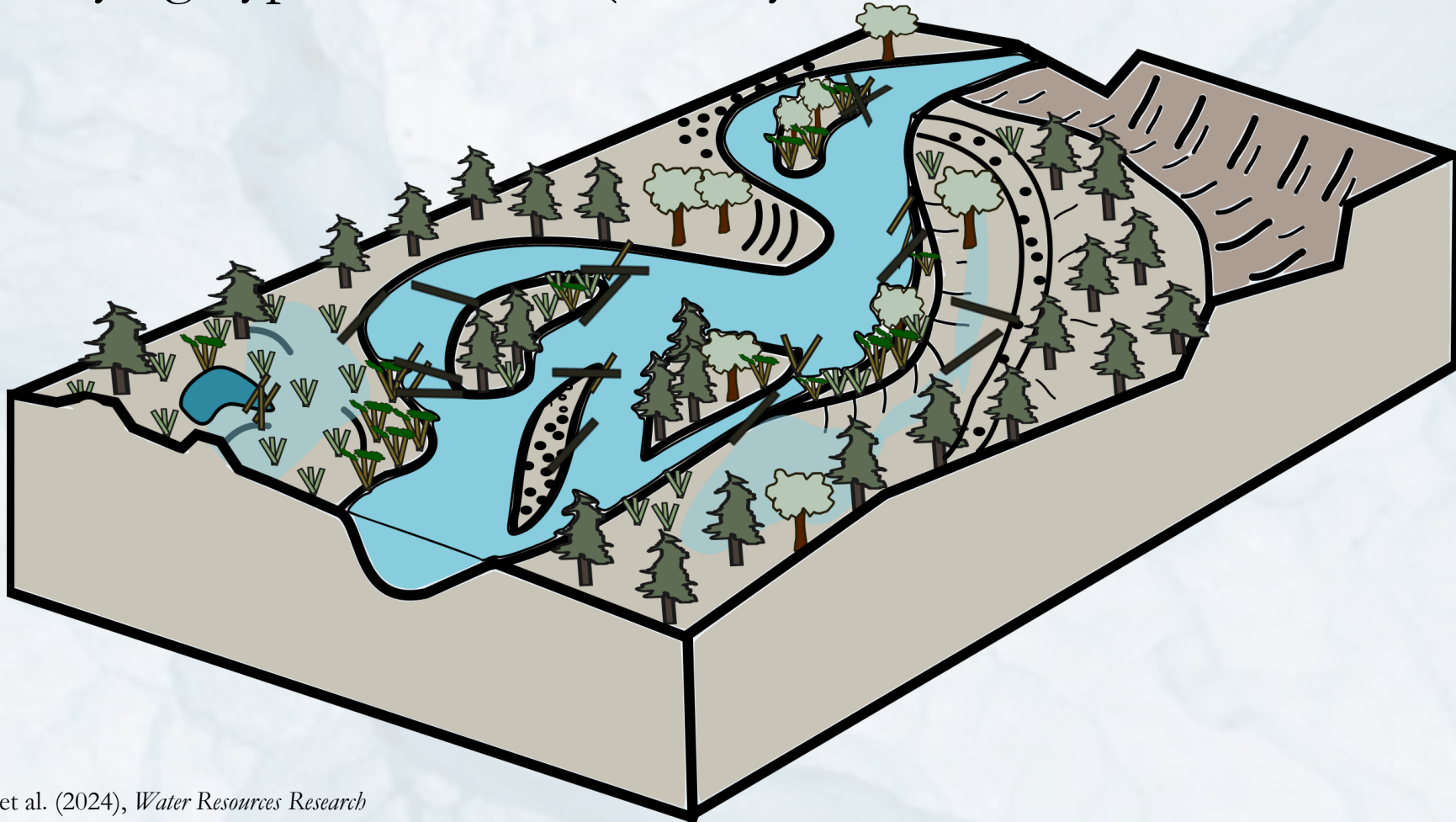
Large wood as a driver and feedback of river corridor spatial heterogeneity

Anna Marshall, Assistant Professor, Department of
Geography & Sustainability, University of Tennessee

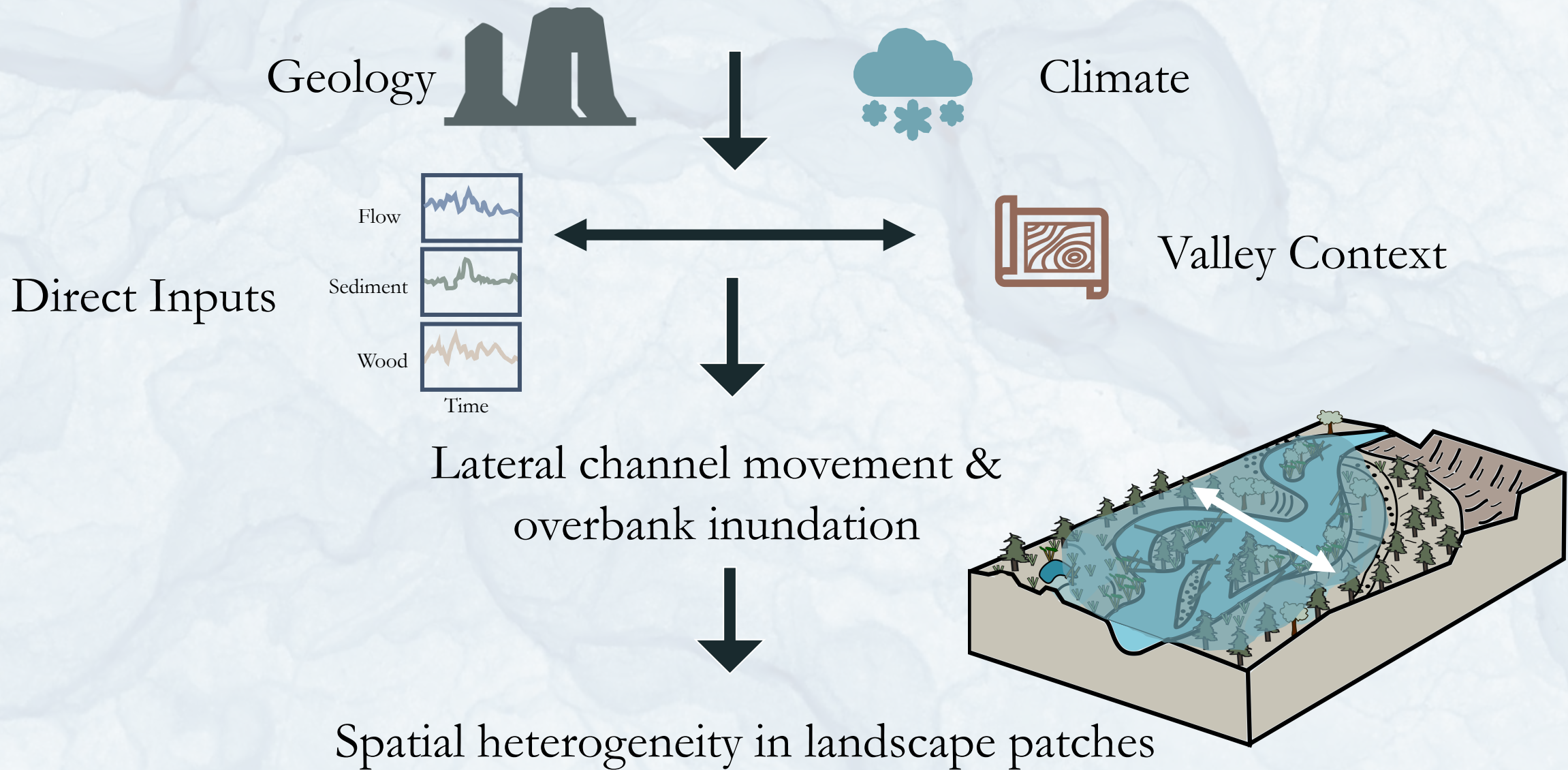
Large Wood Applications in River Restoration Workshop – February 13, 2025

What is a river corridor?

River corridor = active channel(s), the adjacent floodplain and riparian zone, and the underlying hyporheic zone (Harvey and Gooseff, 2015; Ward 1989)



What is spatial heterogeneity?



The importance of river corridor spatial heterogeneity

Wide, low-gradient zones of the river corridor with wood-included spatial heterogeneity are important for:

Absorbing disturbance inputs



Enhancing hyporheic exchange



Creating & maintaining habitat diversity





Societal expectations
Simple, stable



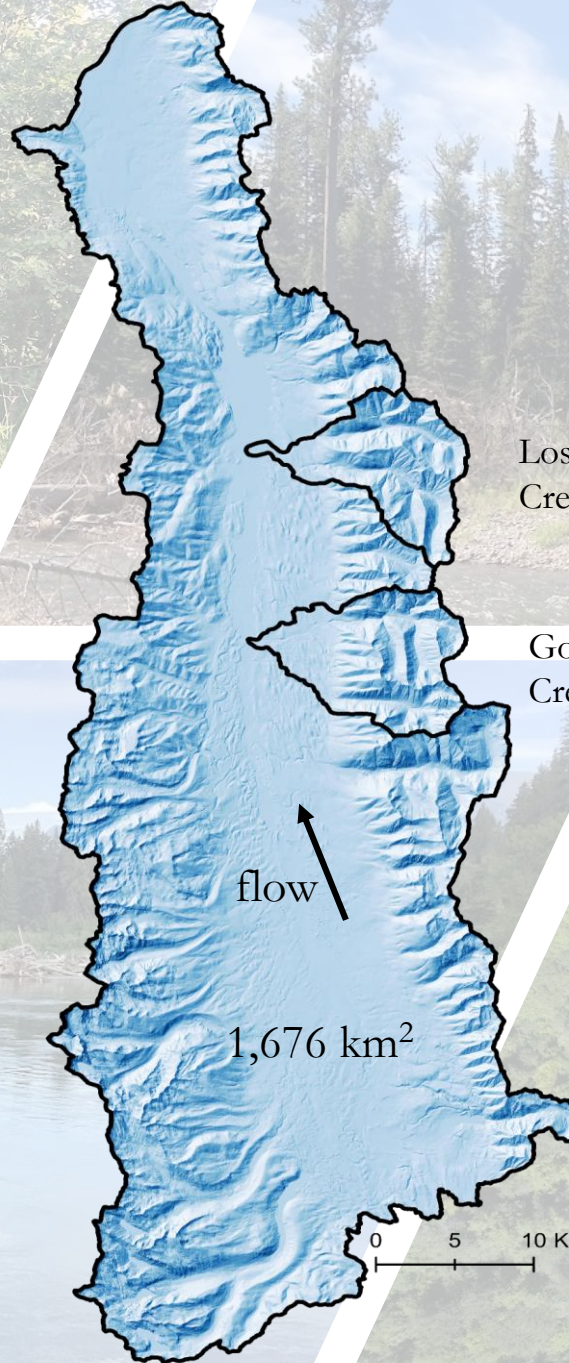
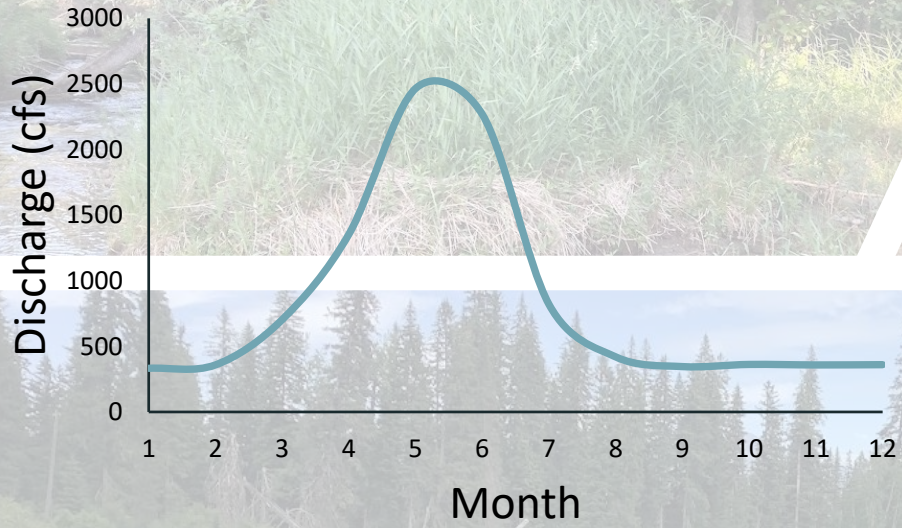
Scientific understanding
Dynamic, spatially heterogeneous



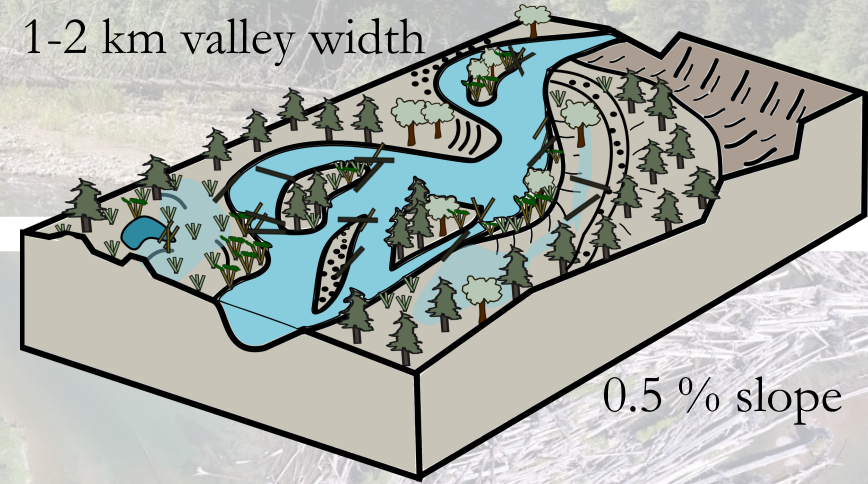
The role of wood in fostering river corridor spatial heterogeneity?

Swan River Catchment

Annual Hydrograph

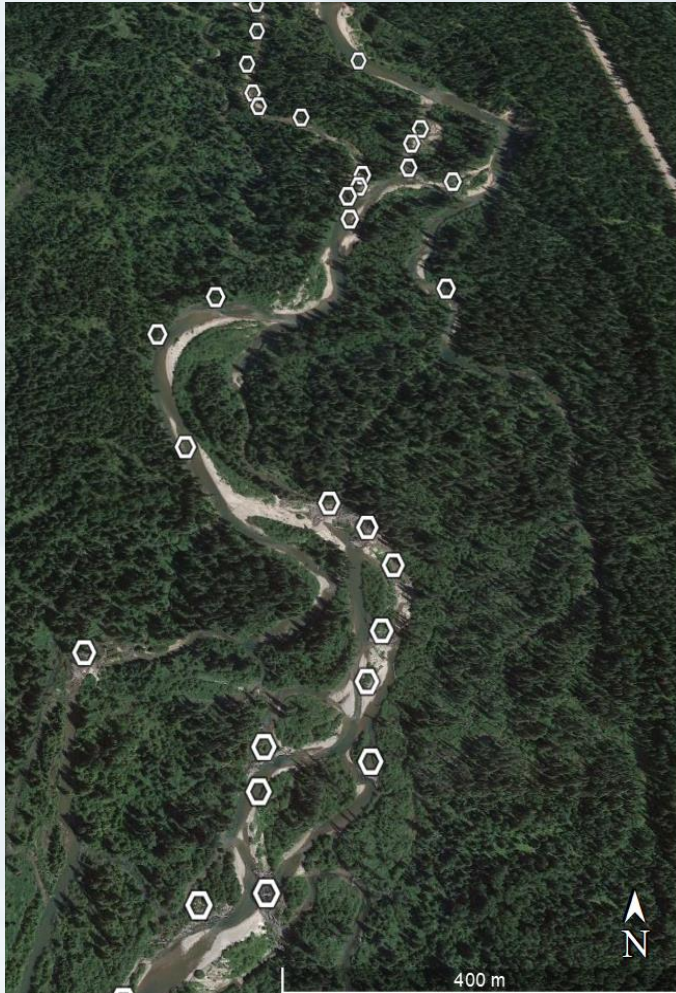


River Corridor Geometry



Evaluating interactions of channel dynamism, logjams, and spatial heterogeneity

Logjams: presence, persistence, distribution density of wood accumulations



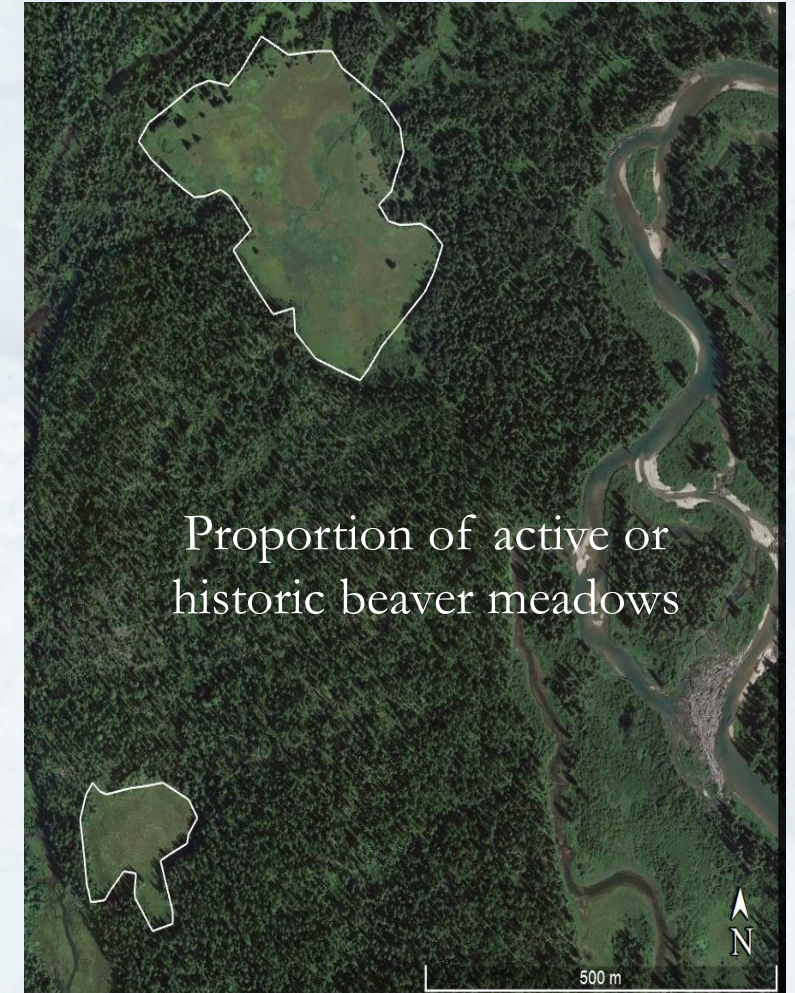
2022



2016



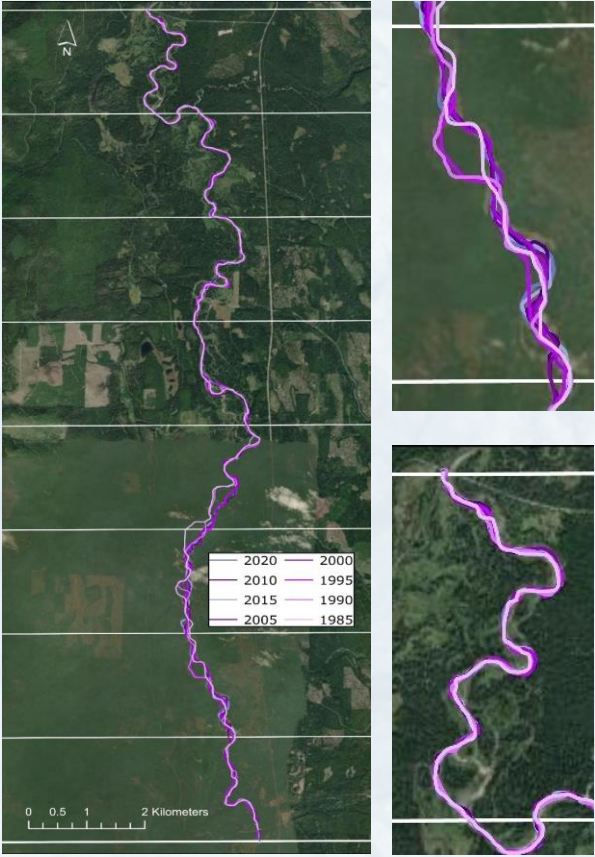
2010



Evaluating interactions of channel dynamism, logjams, and spatial heterogeneity

Channel dynamism: how much do the channels move

Average channel migration

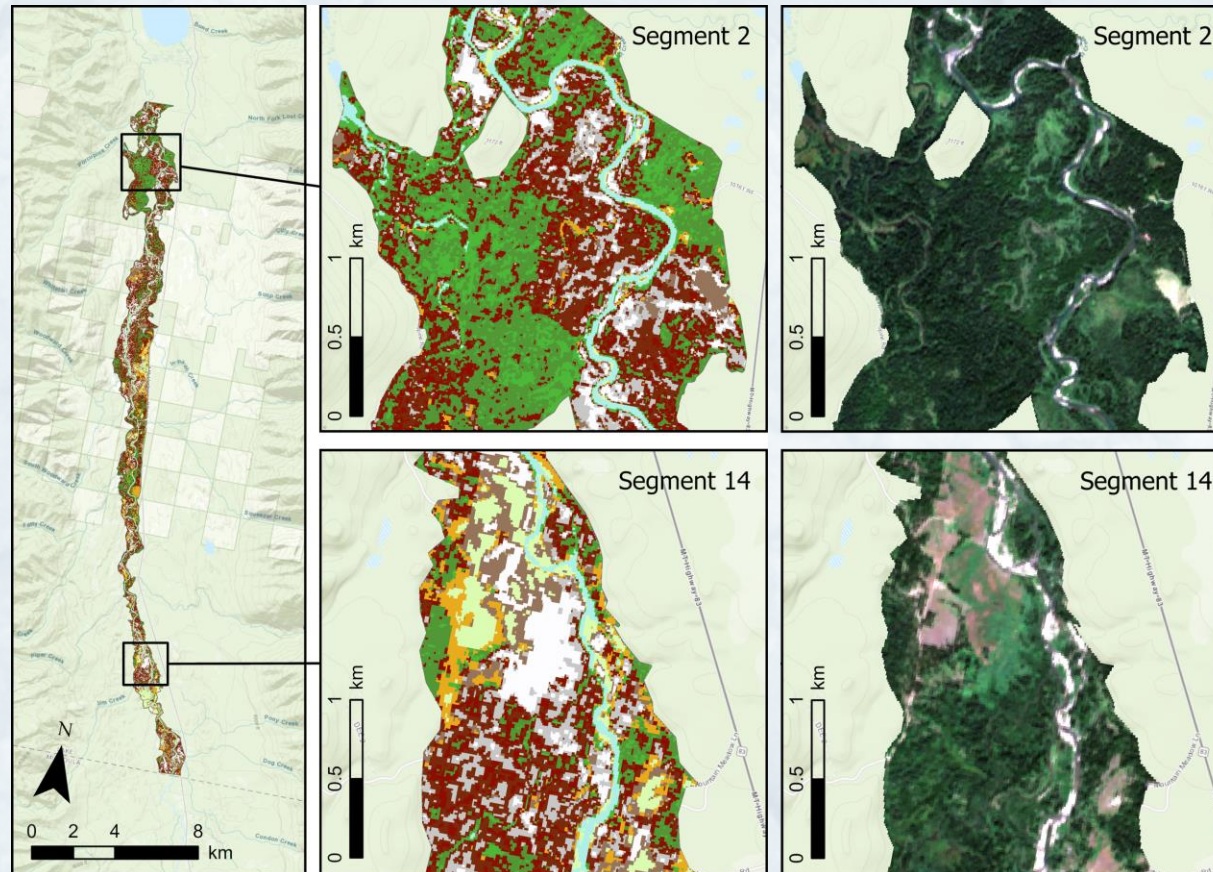


Total sinuosity

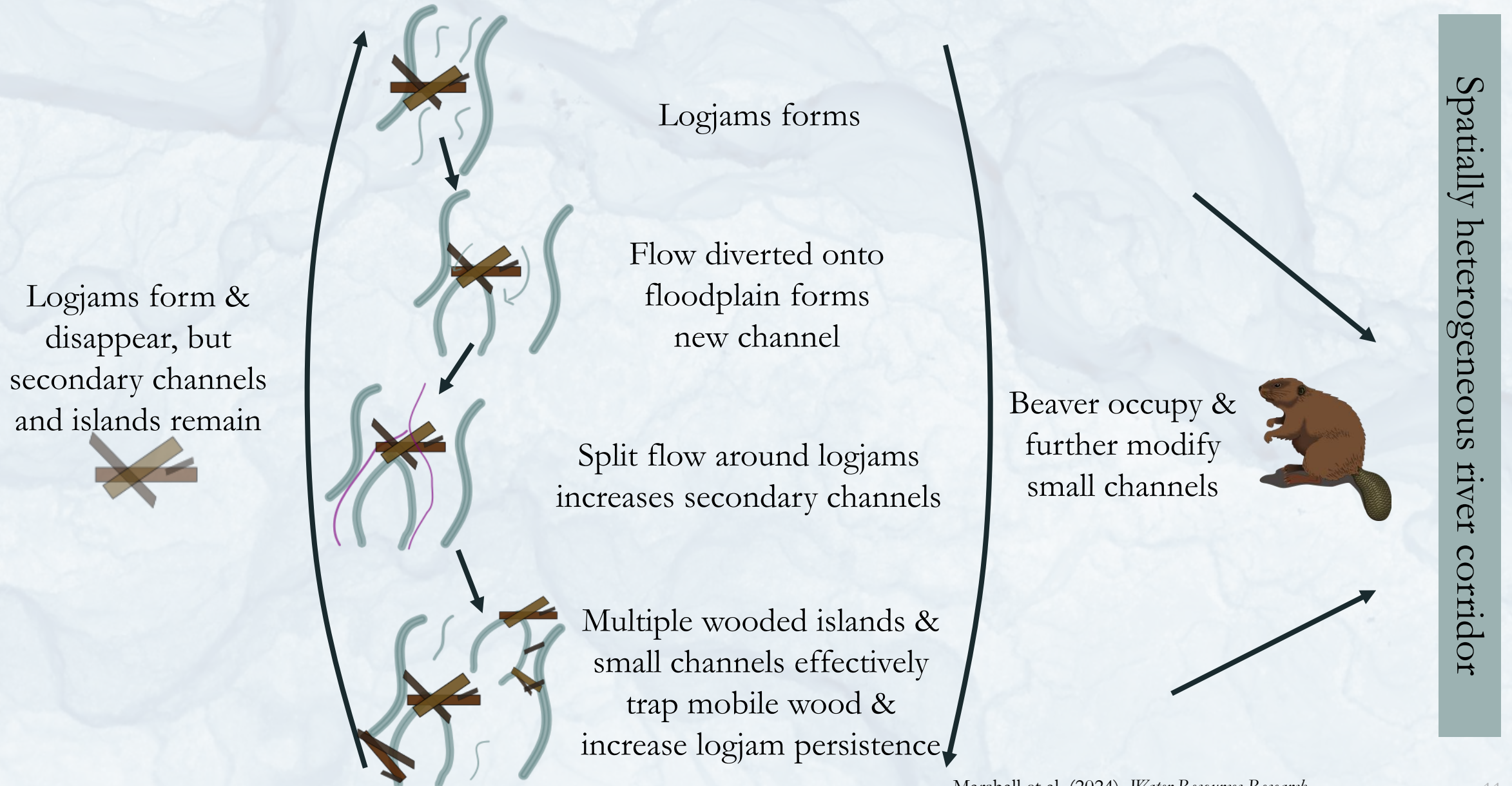


Evaluating interactions of channel dynamism, logjams, and spatial heterogeneity

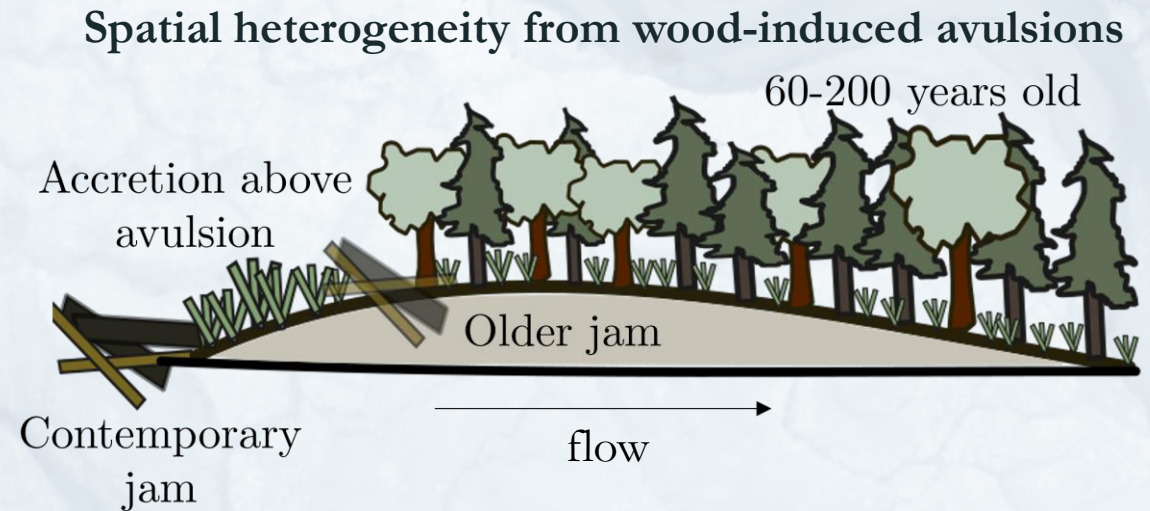
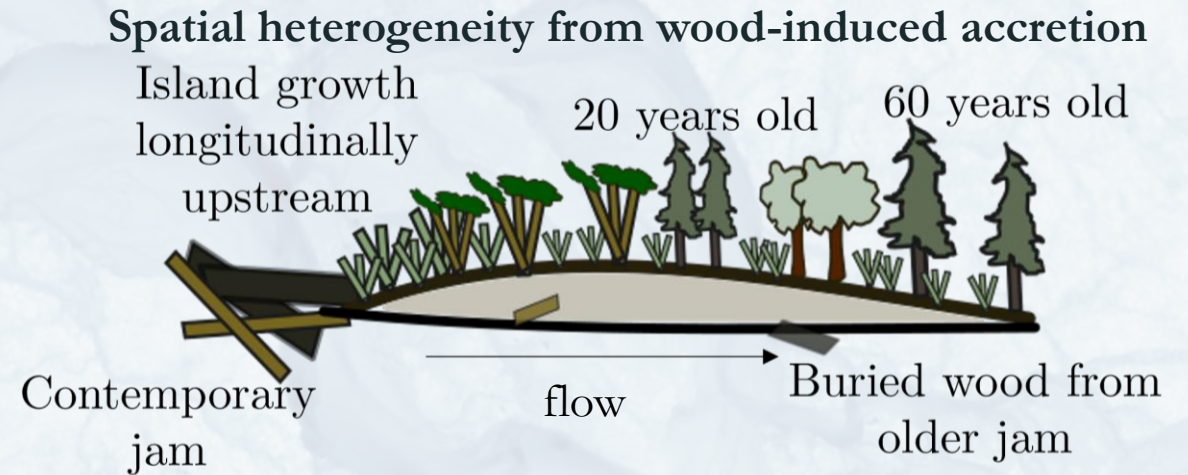
Spatial heterogeneity: similarities in topography, substrate, or vegetation as landscape patches



Reaches with more logjams and channel dynamism have higher spatial heterogeneity



Spatial heterogeneity persists after logjams are no longer present



Using our understanding of wood-induced river processes in river restoration

- Sections of the river corridor with more logjams and more beaver meadows had higher spatial heterogeneity
 - Prioritizing wide, wood-rich retention zones within a river corridor is important for fostering spatial heterogeneity



Using our understanding of wood-induced river processes in river restoration

Spatial heterogeneity persists after logjams are no longer present

- Wood reintroduced to the river corridor does not have to be anchored in place to facilitate heterogeneity



Considering the geomorphic context of a river

Process-based restoration, which focuses on restoring conditions under which river processes such as stream flow and sediment movement create and maintain a functioning river corridor is not a one-size-fits-all approach



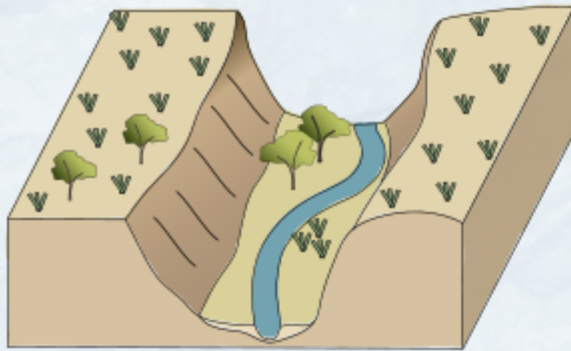
Unconfined beaver meadow



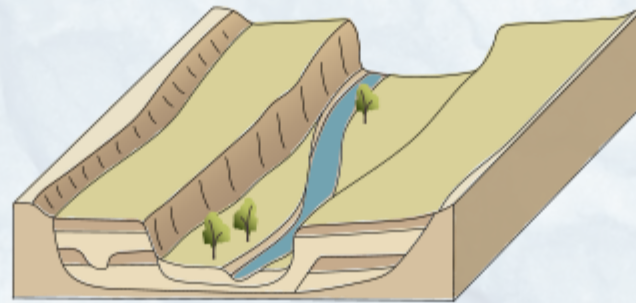
Unconfined multithread



Unconfined meandering



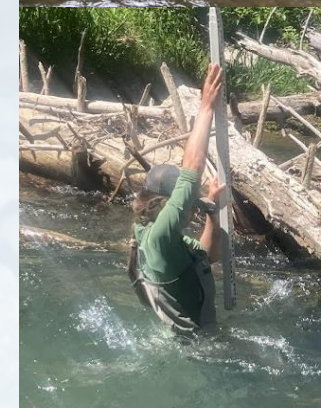
Confined meandering



Terraced meandering



Delta lowland




Acknowledgements

Co-authors and contributors – Ellen Wohl, Hiromi Uno, Emily Iskin, Lucas Zeller, Bob Hall, Brad Erkkila, Peter Raymond, Yale Analytical & Stable Isotope Center and Yale Center for Natural Carbon Capture

Field Help – McKenna Pressley, Alex Messer, Nathan Terault, Flathead Lake Bio Station, Swan State Forest

I acknowledge that the lands this field research was conducted on are the homelands of the Confederate Salish, Kootenai, and Flathead Tribal Nations and recognize, with respect, the Indigenous peoples as stewards of the land and waters that I worked on.



A scenic landscape featuring a river flowing through a valley. The foreground is dominated by tall, thin grasses and some bare branches. The middle ground shows a river with a small dam or structure. The background is filled with trees, many of which have turned bright yellow, suggesting autumn. A mountain range is visible in the distance under a clear sky.

Thank you!
amarshall@utk.edu